

Bison Mini Barrier

Specification Sheet
WFS150007

22/04/24

safesite[®]
F A C I L I T I E S



Bison Mini Barrier

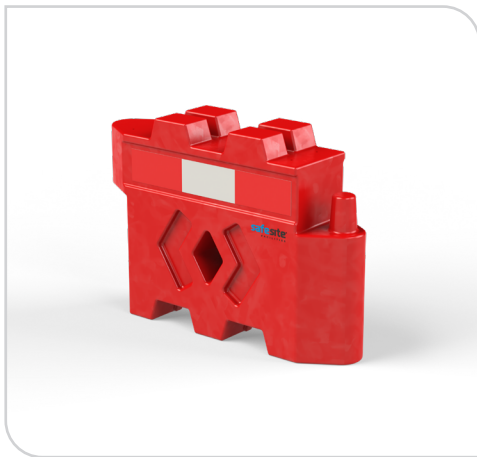
The Mini Bison boasts the same useful features as the larger Bison and Bison 800 barriers, while being smaller in form factor and a budget-friendly choice for projects needing a more robust barrier than others on the market.

Outperforming competitors, the Mini Bison boasts a filled weight of 70kg and an impressive 60-degree rotation.

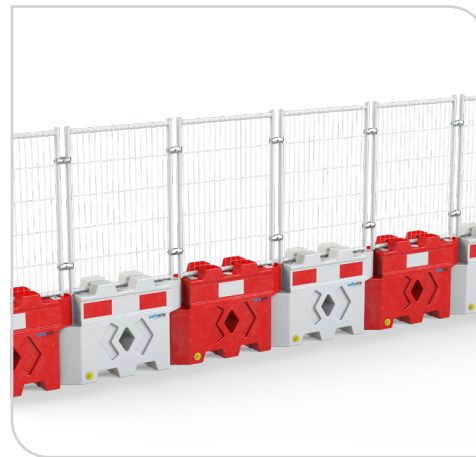
In addition, we provide an anti-climb, powder-coated white panel to raise the barrier to over all height of 2m, marking it a versatile option for your site.

Key Features

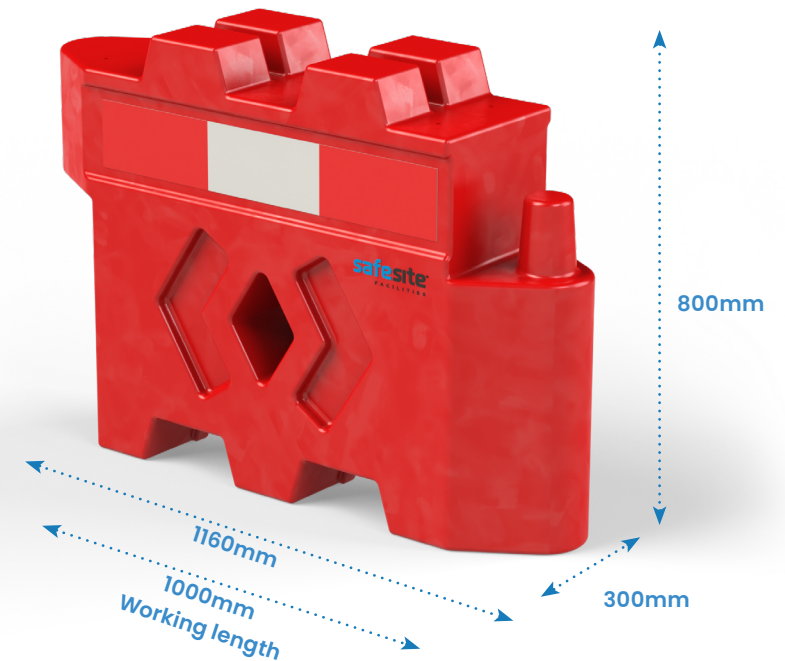
- > A strong and durable site security solution
- > Rotates 60 degrees angles
- > Chapter 8 compliant hi-visibility strips
- > Anti-slide feature when stacked
- > Extend the height to 2m with a Anti-climb mesh panel
- > Easy to install and move around site via forklift



Singular Bison Mini Barrier



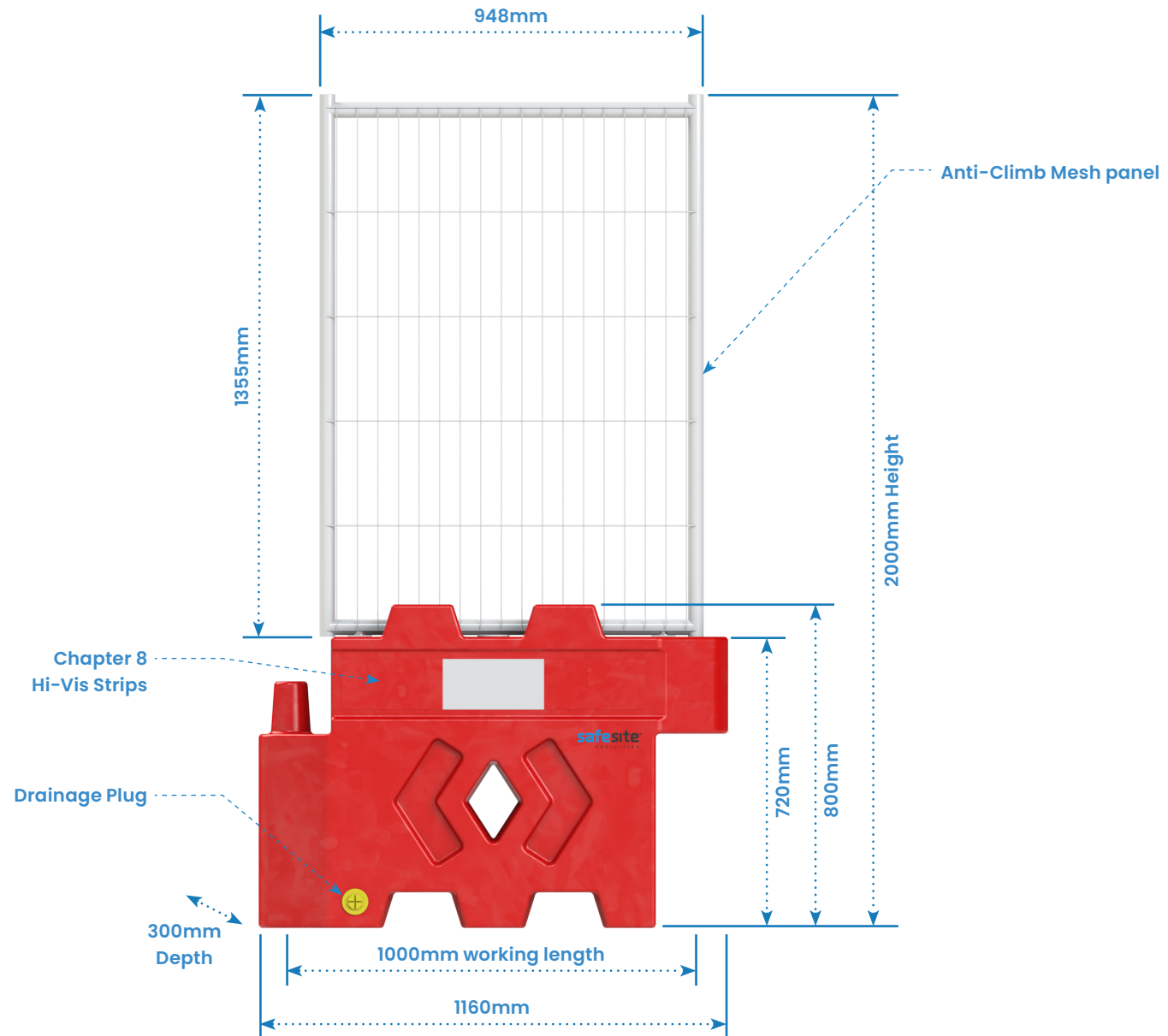
Line of Bison Mini Barriers



Description	Size (mm)	Weight (kg)	Weight Filled (kg)
WFS150007 - Bison Mini Barrier	H800 x W1000 x D300	9	70
WFS150055 - Bison Mini Mesh Panel	H1355 x W948 x D38	6	-

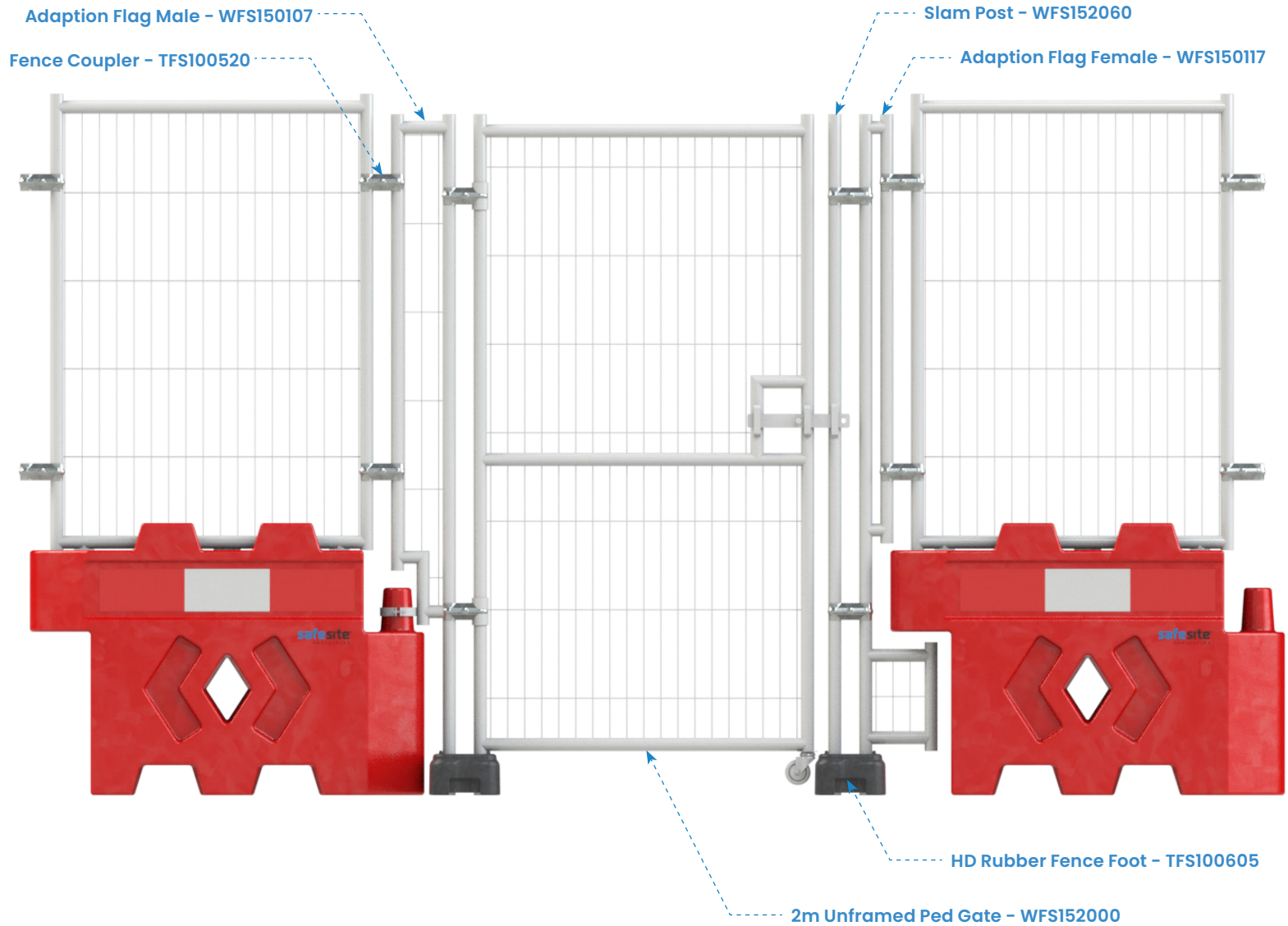


Technical Details





Technical Gate Details





Installation parts

Bison Mini Water Filled Barrier – Measurements in mm

Standard parts: Please see below pictures and quantities of additional parts you will receive with each Bison Mini Barrier, the parts below are an essential safety requirement when installing the Bison correctly.

1 Drainage plug
Quantity: 1



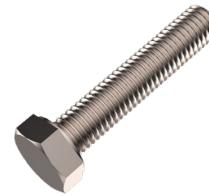
Size (mm)	Weight (kg)
H65 x W65 x D28	-

2 Filler cap
Quantity: 1



Size (mm)	Weight (kg)
H20 x W100 x D100	-

1 M10 x 50mm Hex head bolts
Quantity: 4



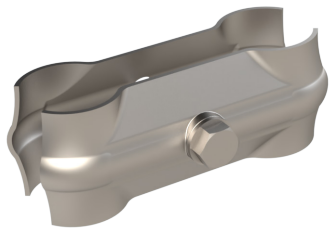
Size (mm)	Weight (kg)
W17 x D50	-

2 M10 x 50 x 1.5mm flat washers
Quantity: 4



Size (mm)	Weight (kg)
W50 x D1.5	-

3 Couplers
Quantity: 2



Size (mm)	Weight (kg)
H50 x W52 x D130	0.2

4 Mesh fence panels
Quantity: 1 per barrier



Size (mm)	Weight (kg)
H1050 x W1938 x D38	17