



Bison Barrier

Specification Sheet
WFS150000

06/02/26

safesite[®]
F A C I L I T I E S

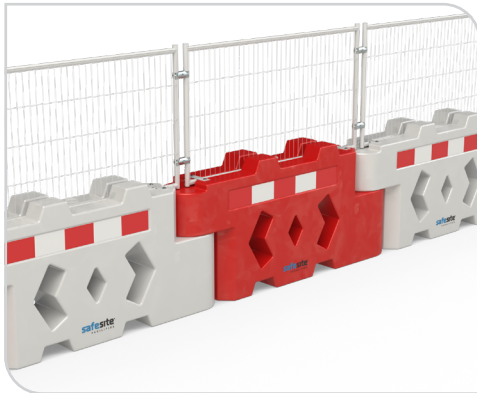


Bison Barrier

The Bison Barrier is a water filled unit for delineation of traffic around sites. Weighing 400kg when full, the barrier can withstand wind speeds of up to 75mph.

Solid hoarding or a mesh fence panel can be added for additional safety and security. This can be personalised if required.

With the addition of a mesh or solid panel, the Bison Barrier has an overall height of 2m and can take standard pedestrian or vehicle gates.



Bison Barrier with Mesh



Bison Barriers with Hoarding and infill panels

Bison Specification

Description	Size (mm)	Weight (kg)	Weight Filled (kg)
WFS150000 – Bison Barrier	H1000 x W2000 x D400	35	400
WFS150020 – Bison Std/800 Anti-Climb Mesh Panel	H1050 x W1938 x D38	8	–
WFS150025 – Bison Std/800 2in Heavy Duty Mesh Panel	H1050 x W1938 x D38	9	–
WFS150040 – Bison Std/800 Mesh Extension Panel	H740 x W1938 x D38	6	–
WFS150030 – Bison Std/800 Hoarding Panel	H1050 x W1938 x D38	17.5	–
WFS150060 – Bison Std/800 Hoarding Infill Panel	H960 x W140 x D1.2	1	–

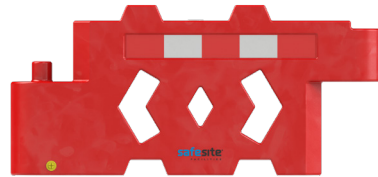
Key Features

- > Chapter 8 reflective strip
- > Can be used with solid hoarding, or mesh fence panels
- > Can be used with vehicle and pedestrian gates
- > Can rotate 90° degrees
- > Fill capacity 400 litres
- > 100% recyclable





1 Bison Barrier Single Unit



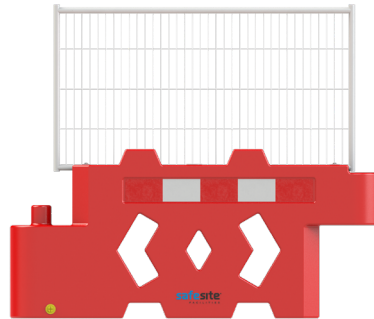
75 mph

Wind speed
withstood, not to
failure point.



MIRA CLASS A - **PASSED**

2 Bison Barrier + Mesh Fence Panel



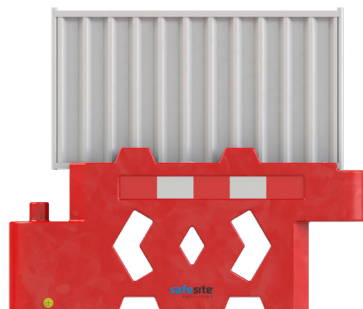
58 mph

Wind speed
withstood, not to
failure point.



MIRA CLASS A - **PASSED**

3 Bison Barrier + Hoarding Panel



38 mph

Wind speed
withstood, not to
failure point.



MIRA CLASS C - **PASSED**

Wind Resistance

The Bison Barrier has been rigorously tested within the MIRA wind tunnel, and achieved multiple Class A passes.

The solid, water-filled nature of the Bison barrier provides the perfect based for the mesh and hoarding panels. Use the barriers alone for an 'A Class' wind resistance performance.

Please see to the right the MIRA Class passes and wind resistance speeds achieved for each of the panels displayed.

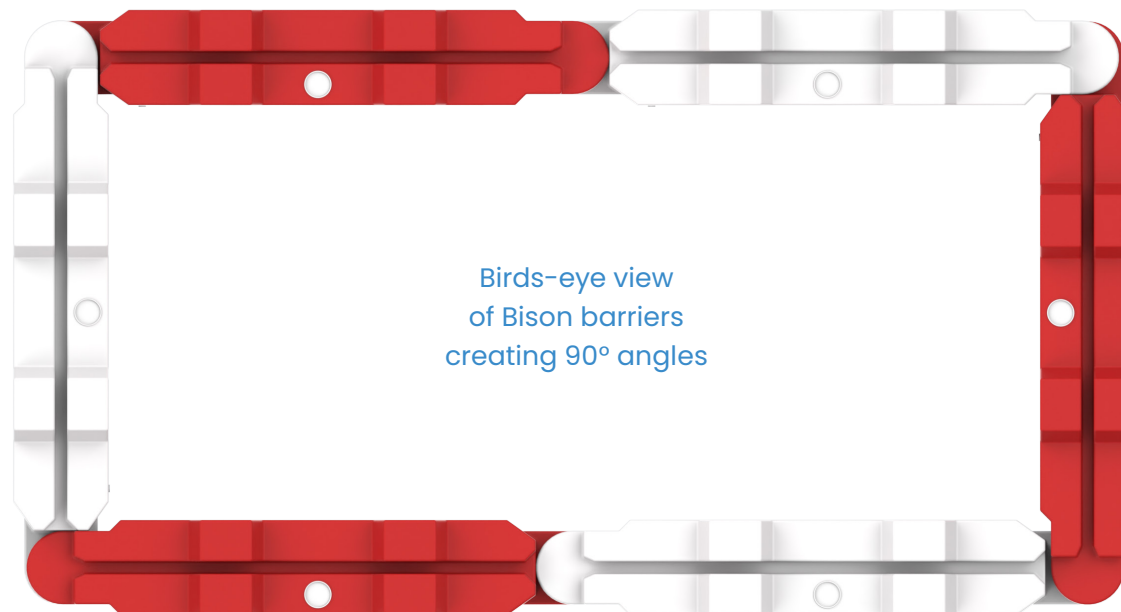


90° degree layout

The Bison is an versatile barrier can be easily positioned at 90° angles.

No additional accessories, adaption barriers or brackets are required to enable the barrier to create corners.

The barrier simply rotates to the angle required using the interlocking arm.



Birds-eye view
of Bison barriers
creating 90° angles

Easily create 90° degree angles



Bison barriers forming curve



Bison barrier end pin



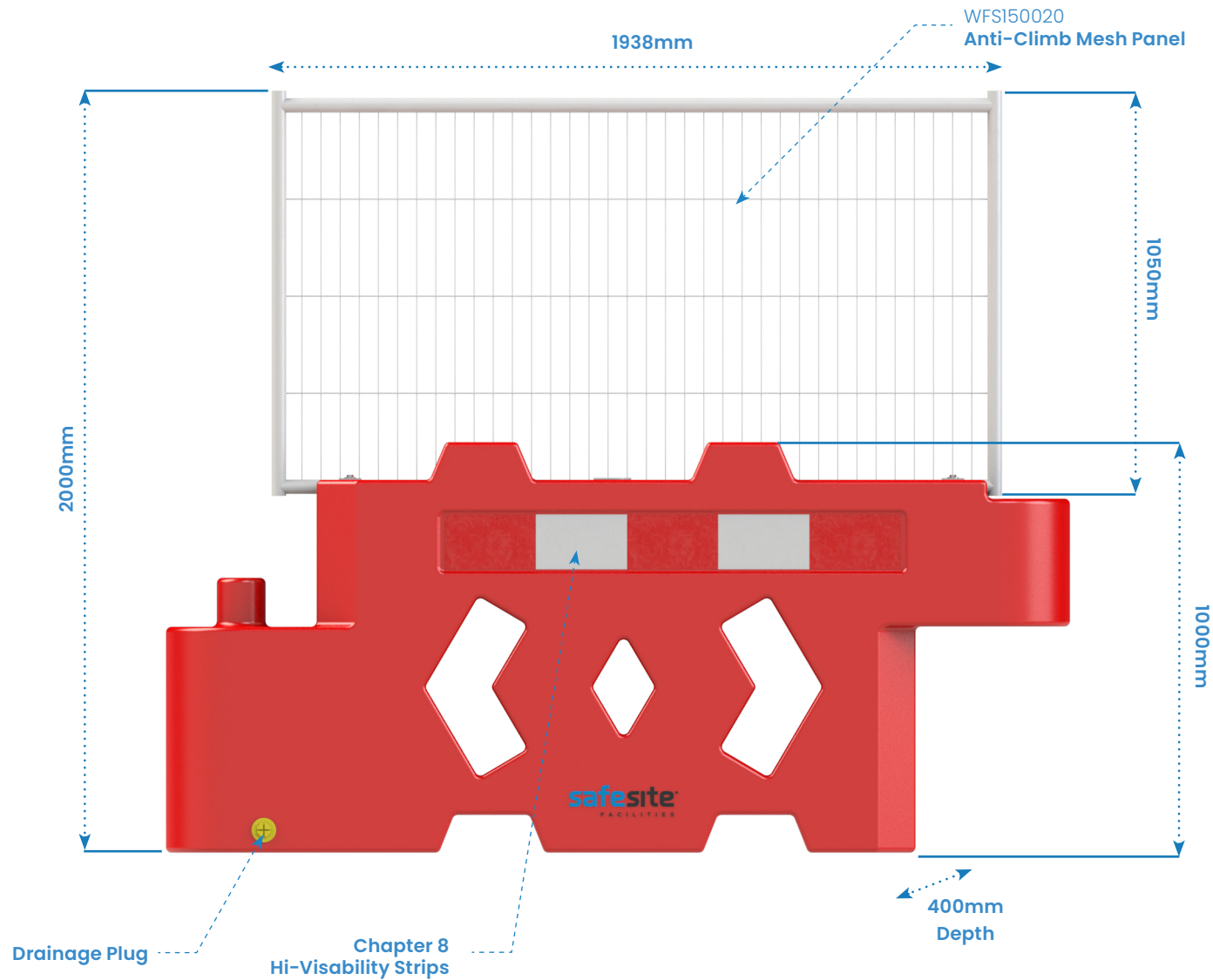
90° angle





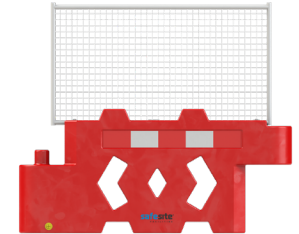
Technical Details

Standard Fencing Panel

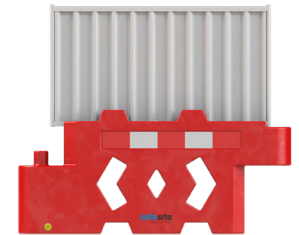


Alternative Options

WFS150025 2in Heavy Duty Mesh



WFS150030 Hoarding



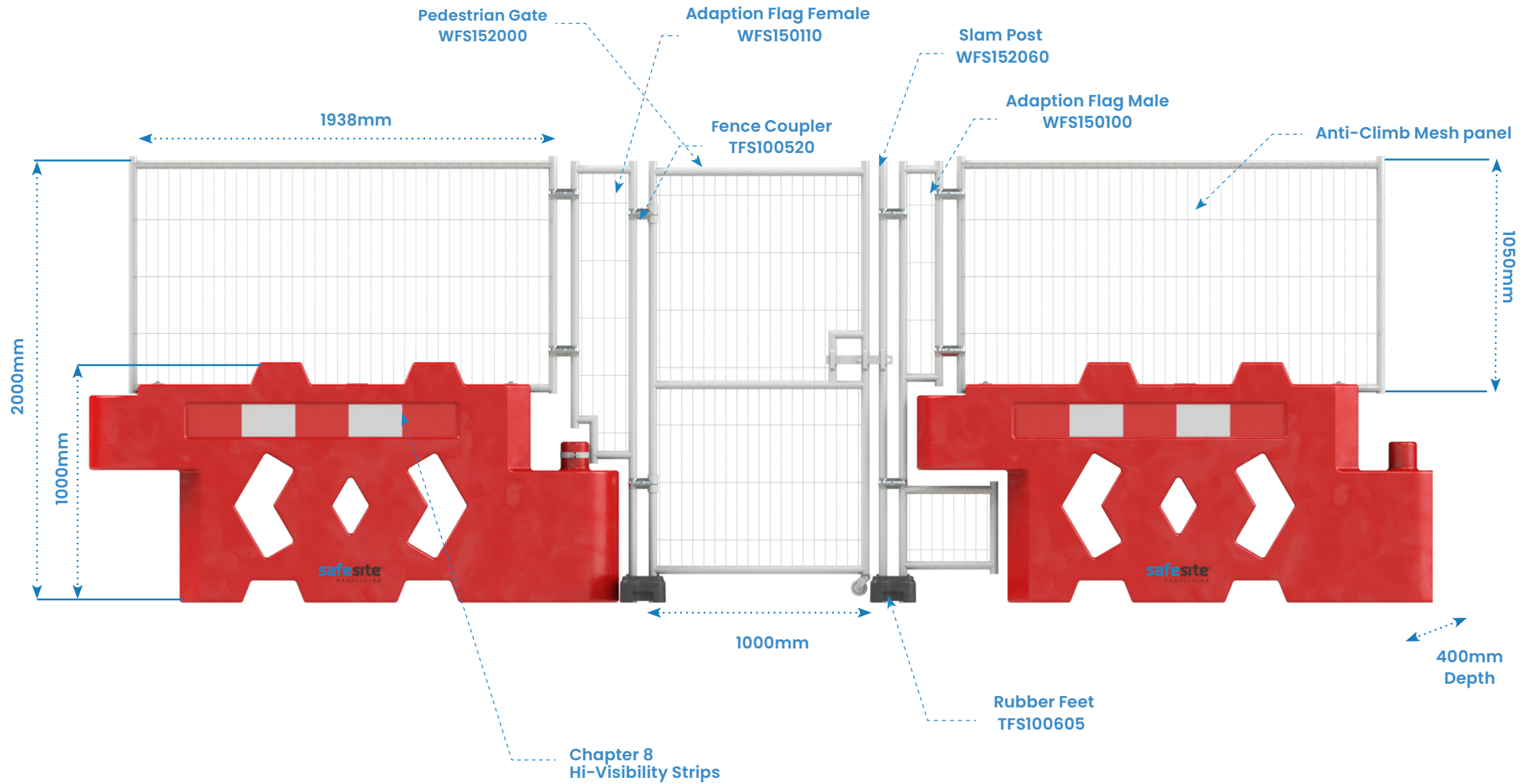
WFS150060 Hoarding Infill





Technical Details

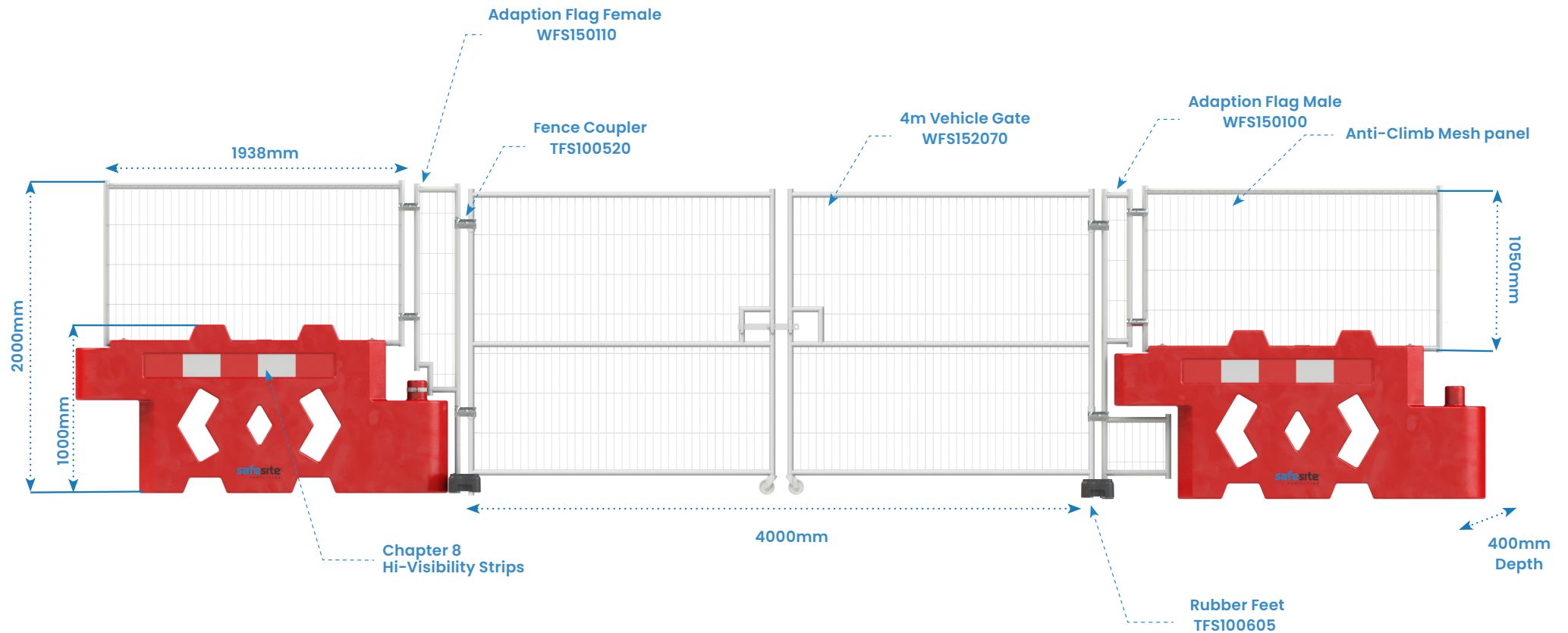
Fencing with Pedestrian Gate





Technical Details

Fencing with Pedestrian Gate





Installation parts

Bison Water Filled Barrier – Measurements in mm

Standard parts: Please see below pictures and quantities of additional parts you will receive with each Bison Barrier, the parts below are an essential safety requirement when installing the Bison correctly.

1 Drainage plug
Quantity: 1



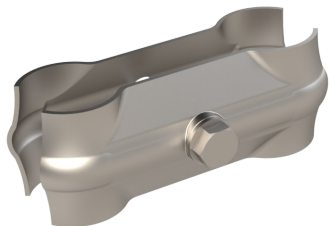
Size (mm)	Weight (kg)
H65 x W65 x D28	-

2 Filler cap
Quantity: 1



Size (mm)	Weight (kg)
H20 x W100 x D100	-

3 Couplers
Quantity: 2



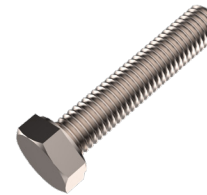
Size (mm)	Weight (kg)
H50 x W52 x D130	0.2

4 Fence or Hoarding panels
Quantity: 1 per barrier



Size (mm)	Weight (kg)
H1050 x W1938 x D38	17

1 M10 x 50mm Hex head bolts
Quantity: 4



Size (mm)	Weight (kg)
W17 x D50	-

2 M10 x 50 x 1.5mm flat washers
Quantity: 4



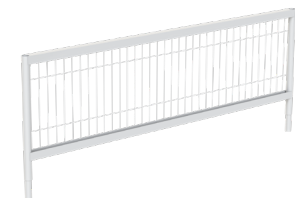
Size (mm)	Weight (kg)
W50 x D1.5	-

5 Hoarding Infill Panel
Quantity: 1 per barrier if required



Size (mm)	Weight (kg)
H960 x W140 x D15	1

6 Mesh extension
Quantity: 1 per barrier if required



Size (mm)	Weight (kg)
H740 x W1938 x D38	6