

## Battery Powered Bulkhead Light

---

Specification Sheet

STS211860

11/12/25

**safesite**<sup>®</sup>  
F A C I L I T I E S



# Battery Powered Bulkhead Light

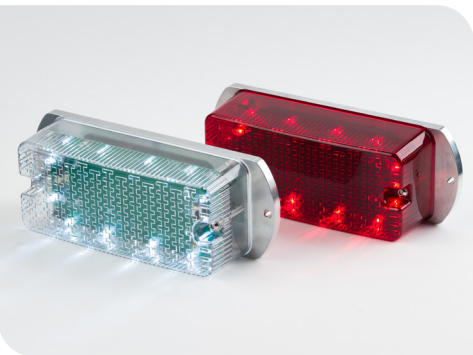
Our battery bulkhead lights come with purpose-designed brackets and fixings tailored to your chosen installation method, whether it's hoarding, Heras fencing, or scaffolding.

The lights are available in either red or white and are commonly used to warn motorists of hoardings or other roadside hazards. Each unit includes a mode switch that lets you choose between constant illumination or flashing.

A built-in daylight sensor automatically turns the lamp off during daylight hours to extend battery life.

Powered by four D-cell batteries, the light can operate for over 6 months in flashing mode and around 12 weeks in constant mode. Tamper-resistant security bolts help prevent unauthorised adjustments.

Bulkhead lights available in red & white

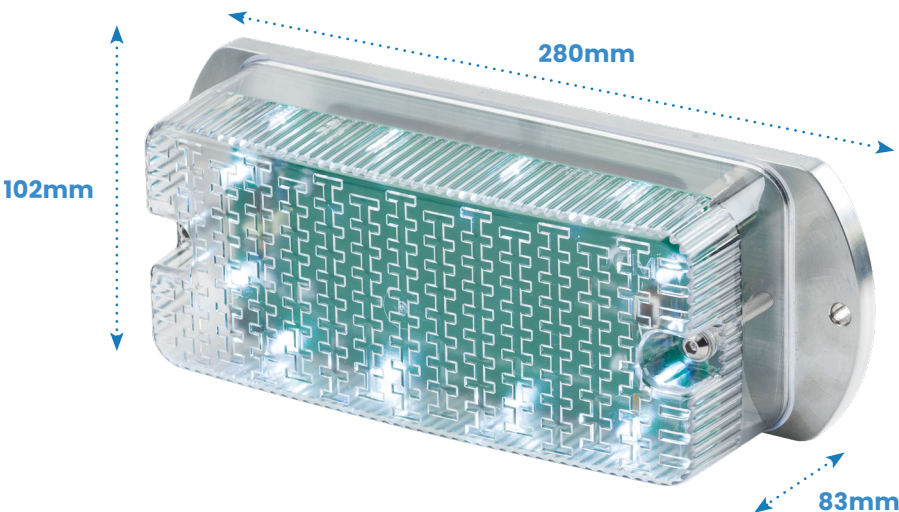


Solid backplate for hoarding fixing



## Key Features

- Battery powered
- Available in red or white
- Available in fence, hoarding & scaffolding fixings
- Light intensity: 1.00 Lux (red), 8.68 Lux (white)
- Additional fixing available for scaffolding & Heras fencing
- Tamper resistant security screws
- 4 x D type Duracell industrial batteries
- RoHS compliant
- 4 selectable flashing or constant mode
- Built in daylight sensor
- All lights come with batteries included & replacement batteries can be provided
- Security key is provided to access the lights with your order

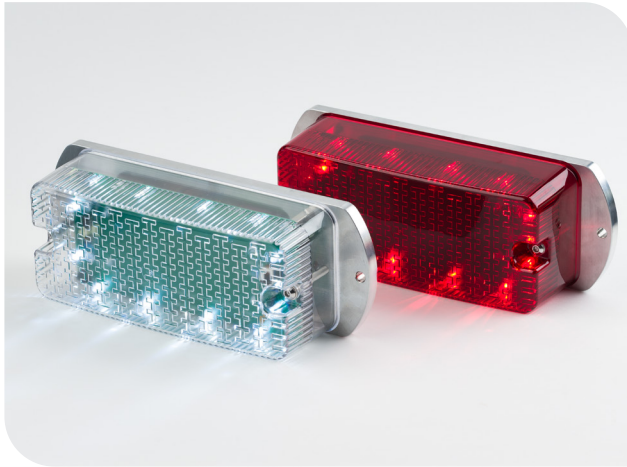


## Battery Powered Bulkhead Light Specification

Description	Size (mm)	Weight (kg)
STS211860 - Battery Powered Bulkhead Light - Red	H102 x W280 x D83	1.5
STS211862 - Battery Powered Bulkhead Light - White	H102 x W280 x D83	1.5



## Battery Powered Bulkhead Light Fixing Options



### Hoarding

Fitted as Standard

Anti-Tamper security screws



### Heras Fence Style Fixing

Fixes onto Heras Style Fencing

Requires a Anti-tamper Fence Coupler Spanner

Uses Heavy Duty Anti-Tamper Gripper Fence Coupler V2

Anti-Tamper security screws



### Scaffold Fixing

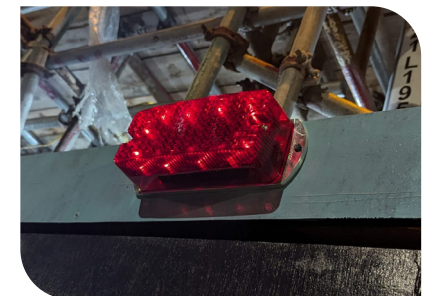
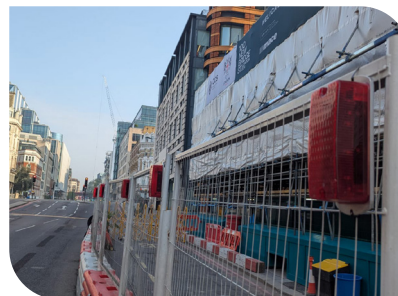
Standard Half swivel Bracket

Uses Scaffold Coupler

Use Allen Key or Security Key

Anti-Tamper security screws

### Battery Powered Bulkhead Lighting in situ



Contact our sales team and let us know what fixing option you need when enquiring