

Product ID:

Evo 55/1m Red – WFS150500

Evo 55/1.5m Red – WFS150450

Evo 80 Red – WFS150550

SafeSite Facilities

Evo Barrier System

Specification Sheet

safesite[®]
F A C I L I T I E S



Evo barrier system

The Evo system is comprised of water filled barriers made from UV stabilized polyethylene. Evo barriers come in various heights, lengths and shapes and are all MIRA wind tunnel tested.

The mesh panels can be attached to the barriers which improves the overall height, without compromising the wind resistance. The Evo 55 1m and 1.5m are the same height and width but are differentiated by their lengths. The Evo 55 measures 1m long and the 1.5 is just that – 1.5m in length. The Evo 55 and 1.5 can be used together and can be connected to a corner barrier to negotiate bends and corners. They are also compatible with the same mesh fence panels.

The Evo 80 stands at 800mm tall which is slightly taller than the Evo 55, which measures 555mm. All the Evo models can negotiate bends but cannot create 90° corners. All members of the Evo ‘family’ are comparatively light. The barriers weigh less than 10kg when empty, and up to 30kg when filled. The low weight of these barriers means they are very easy to handle and stack for transportation.

Size and dimensions

Measurements in mm and kg

Evo Model	Length	Width	Height	Weight	Weight Full	Colour	Product ID
55/1m	1000	400	555	8	28	Red	WFS150500
55/1m	1000	400	555	8	28	White	WFS150510
55/1.5m	1500	400	555	10	30	Red	WFS150450
55/1.5m	1500	400	555	10	30	White	WFS150460
80	1200	400	800	9	29	Red	WFS150550
80	1200	400	800	9	29	White	WFS150560

Key Features

- > MIRA wind tunnel tested (withstood speeds of up to 55mph)
- > Easy to stack and transport
- > Can be filled with water or sand
- > Made from UV MDPE
- > Can be reused and recycled
- > Easy to assemble
- > Can be positioned on bends and corners (1.5 and 55 only)
- > Chapter 8 compliant
- > Available in different colours (red and white as standard)





Evo 55/1m barrier

The Evo 55 1m creates a safe, secure, attractive perimeter which is perfect for pedestrian control, roadblocks and construction sites.

These barriers can be joined to form a solid wall with zero gaps. Mesh panels can be added to increase the height, and corner units attached to create neat bends and shapes.

These are light water filled barriers which are easy to handle and install. They are made from UV MDPE to ensure maximum resilience in outdoor locations.

Size and dimensions

Measurements in mm and kg

Item	Length	Width	Height	Weight	Weight Full	Colour	Product ID
55/1m barrier	1000	400	555	8	28	Red	WFS150500
55/1m barrier	1000	400	555	8	28	White	WFS150510
Mesh panel	1450	38	560	4	-	White	WFS150920
Reflective panel	1450	38	560	4	-	White	WFS150922

Key Features

- > Create a safe, secure, defined perimeter
- > The barriers create a solid wall without gaps
- > Fast, speedy installation
- > Barriers for both traffic and pedestrian situations
- > Compatible for post & plank or mini mesh panels
- > Made from UV stabilised prime polyethylene
- > Easy to stack and transport
- > Can incorporate mesh handrail system
- > Allows for angles and curves
- > Fill capacity 20 litres

The Evo 55/1m barriers form a gapless link



The Evo 55/1m barriers with mesh in a curve





Evo 55/1.5m barrier

The 1.5m version of the Evo 55 Barrier is the same height as the 1m version, and can also be filled with either sand or water.

The unfilled weight of the barriers is just 10kg and 30kg when full. The light weight and 1.5m length of these barriers means they are swift to position and install.

The units interlock together to make a single structure so no one can slip or trip between the barriers. Each barrier can be stacked for ease of transportation.

Just as with the 1m Evo barriers, this can be used with mesh fence panels, mini mesh with reflective panel and post with reflective panel. They also connect with a corner angle for use on sites with tight turns.

The mesh panels are powder-coated (white) to create a professional finish to the barriers. The reflective rail option is great for both traffic and pedestrian situations.

Size and dimensions

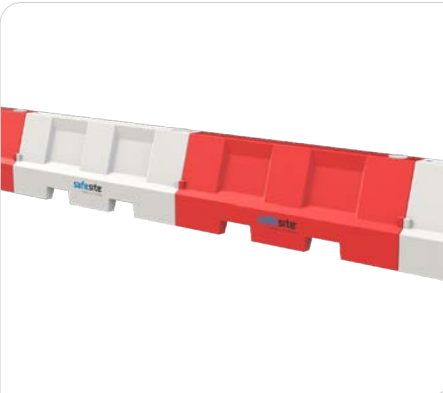
Measurements in mm and kg

Item	Length	Width	Height	Weight	Weight Full	Colour	Product ID
55/1.5m Barrier	1500	400	555	10	30	Red	WFS150450
55/1.5m Barrier	1500	400	555	10	30	White	WFS150460
Mesh panel	1450	38	560	6	-	White	WFS150470
Reflective panel	1450	38	560	6	-	White	WFS150480

Key Features

- > Interlocks without need for additional accessories
- > Can be filled with water or sand
- > Compatible with post / reflective panel, and mesh fence
- > Compatible with Evo barrier range
- > Made from UV stabilized MDPE for extended outdoor use
- > Easy to stack and transport.

Line of Evo 55 1.5m barriers joined in line



Barrier with mesh fence



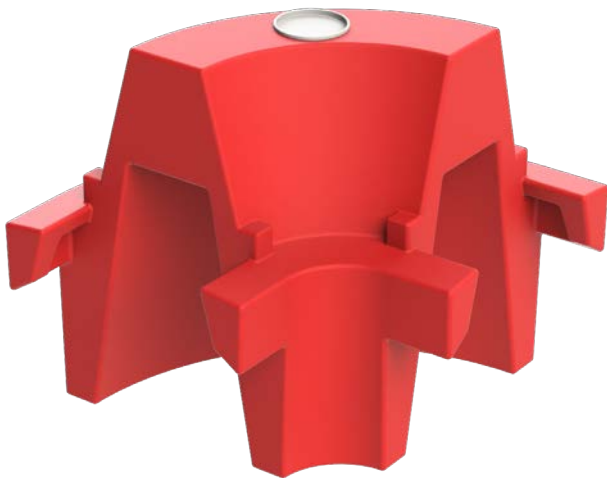


Evo 55 1m & 1.5m barrier 90° corner section

The Evo 55 barriers can connect to an angle barrier to navigate 90° angles.

The Evo 90° corner section is very easy to install, simply align the corner pocket over the barrier lugs and gently slot the angled section into place.

It's also easy to manoeuvre into position while empty, yet once filled, provides a substantial addition to the traffic safety system.



Size and dimensions

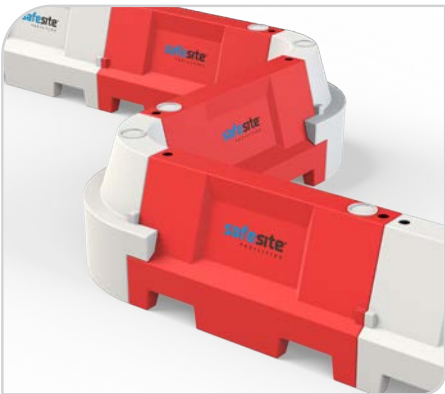
Measurements in mm and kg

Length	Width	Height	Weight	Weight Full	Colour	Product ID
430	580	555	4.5	18.5	Red	WFS150520
430	580	555	4.5	18.5	White	WFS150530

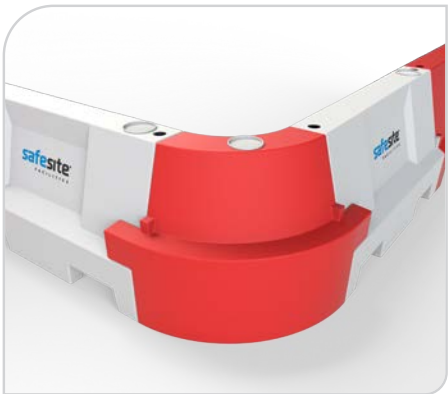
Key Features

- > Create 90° turns with ease
- > Can also be filled with water
- > Quick and easy to manoeuvre into position
- > Available in red and white
- > Fits onto either end of the Evo 55 1m and 1.5m barriers
- > Can produce left or right hand corners
- > Weighs only 4.5kg when empty
- > Available with angled mini mesh
- > Allows for more flexibility when setting out secure areas.

Evo 55's seamlessly forming 'S' bend shape



External profile of the 90° corner section





Evo 80 barrier

Evo 80 Barriers can be water filled, or for more permanent requirement, sand filled and assembled with ease.

They are designed to create a solid wall leaving no gaps between each barrier when linked together. Produced from UV stabilised prime polyethylene, each design is fully stackable for ease of transport and storage.

They are predominantly produced in red or white but other colours are available if required.

Size and dimensions

Measurements in mm and kg

Item	Length	Width	Height	Weight	Weight Full	Colour	Product ID
80 Barrier	1200	400	800	9	29	Red	WFS150550
80 Barrier	1200	400	800	9	29	White	WFS150560
Mesh panel	1150	38	525	5	-	White	WFS150570
Reflective panel	1150	38	525	5	-	White	WFS150580
Post and rail	1220	38	1150	1.5	-	White	WFS150580

Key Features

- > Constructed from UV stabilised prime polyethylene
- > Ideal for site delineation and safety
- > Compliant with Chapter 8 Street Works
- > Interlocking design allows a continuous safety barrier
- > Compatible with post & rail, reflective and mini mesh panels
- > Easily stackable for transport and storage
- > Custom colours available
- > High visibility
- > 12 barriers per oversized pallet
- > Delivery anywhere in the UK.

Evo 80 securing site perimeter



Evo 80 creating enclosure





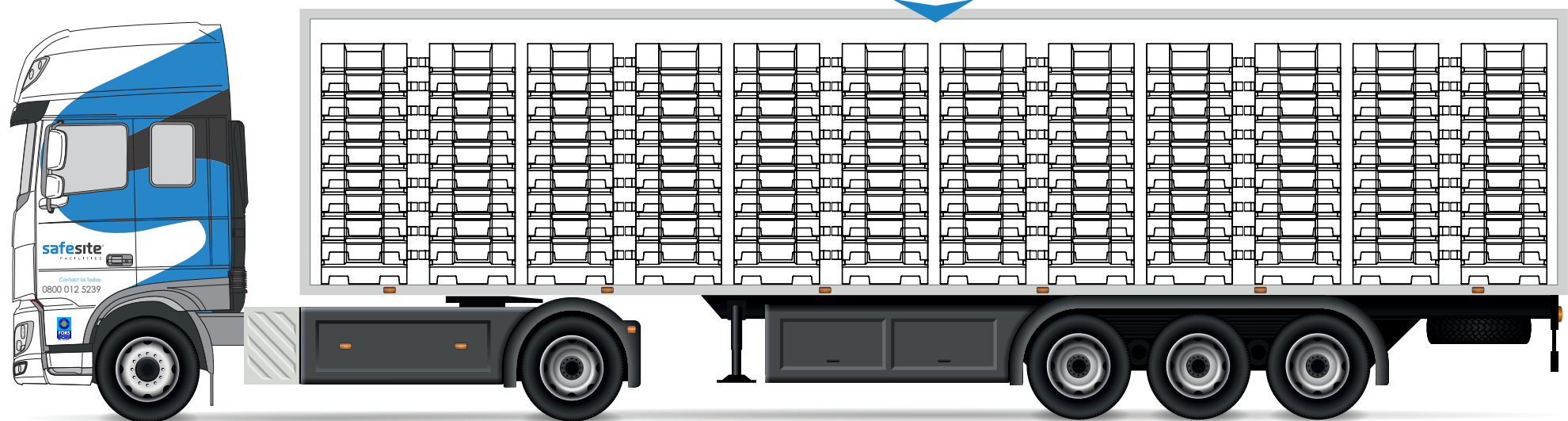
Evo 55/1m stacking guide

The diagrams on this page are a guide as to the safe packing / stacking procedure when loading the barriers onto a curtain side trailer.

You can stack the barriers 9 high and 6 across (the width of a lorry bed).

The curtain side lorry has the capacity to take 648 barriers on a full load.

Diagram below demonstrates the correct loading formation when transporting a maximum load of 648 barriers, onto a curtain sided artc trailer.



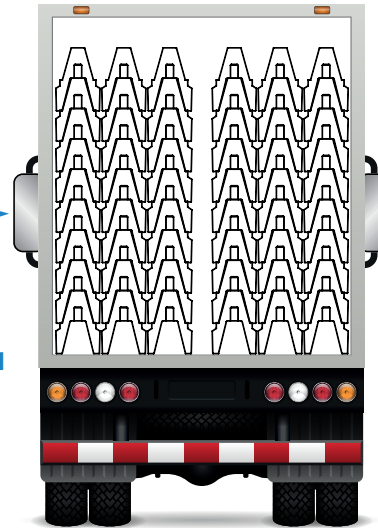
1

As viewed from trailer rear

Load from side



**Evo 55 Barriers
stacked 9 high
and 6 across
width of lorry bed**



View from the side of the trailer

2

Side formation when loading Evo barriers



Bundle of Evo barrier being loaded onto an arctic





Evo 55/1.5m stacking guide

The diagrams on this page are a guide as to the safe packing / stacking procedure when loading the barriers onto a curtain side trailer

You can stack the barriers 9 units high and 3 across (the bed of a lorry).

27 barriers can be bundled together and positioned side by side.

A curtain side lorry has the capacity to take 14 bundles and total of 378 barriers.

As viewed from trailer rear

Load from side



**Evo 1.5 Barriers
stacked 9 high,
3 across**

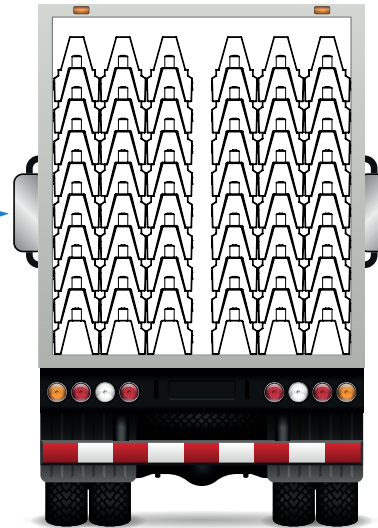
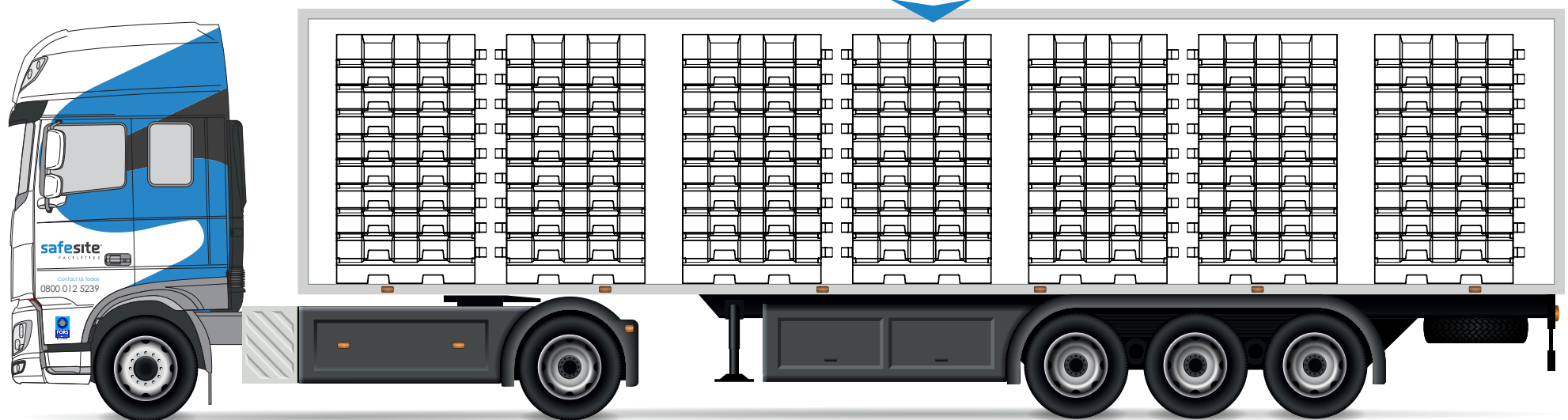


Diagram below demonstrates the correct loading formation when transporting a maximum load of 378 barriers, onto a curtain sided arctic trailer.

View from the side of the trailer





Evo 80 stacking guide

The diagrams on this page are a guide as to the safe packing / stacking procedure when loading Evo 80 Barriers onto a curtain side trailer

The Evo 80 Barrier weighs a relatively light 9kg, which, combined with its unique stacking design, enables you to stack the Evo 80 4x high 3x columns across to achieve 12x barriers per bundle, two bundles can be positioned side by side equalling 24x spanning the width of the trailer.

The curtain side lorry has the capacity to take 20x bundles, a total of 240x barriers.

As viewed from trailer rear

Load from side



**Evo 80 Barriers
stacked 4 high,
3 across**

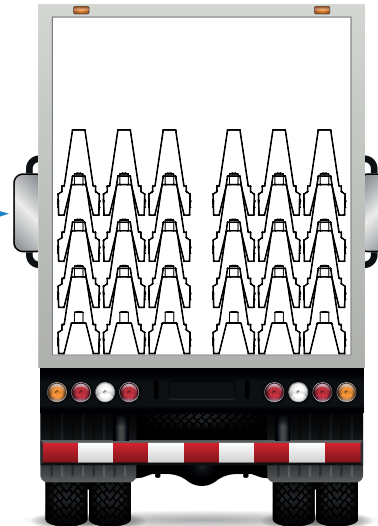
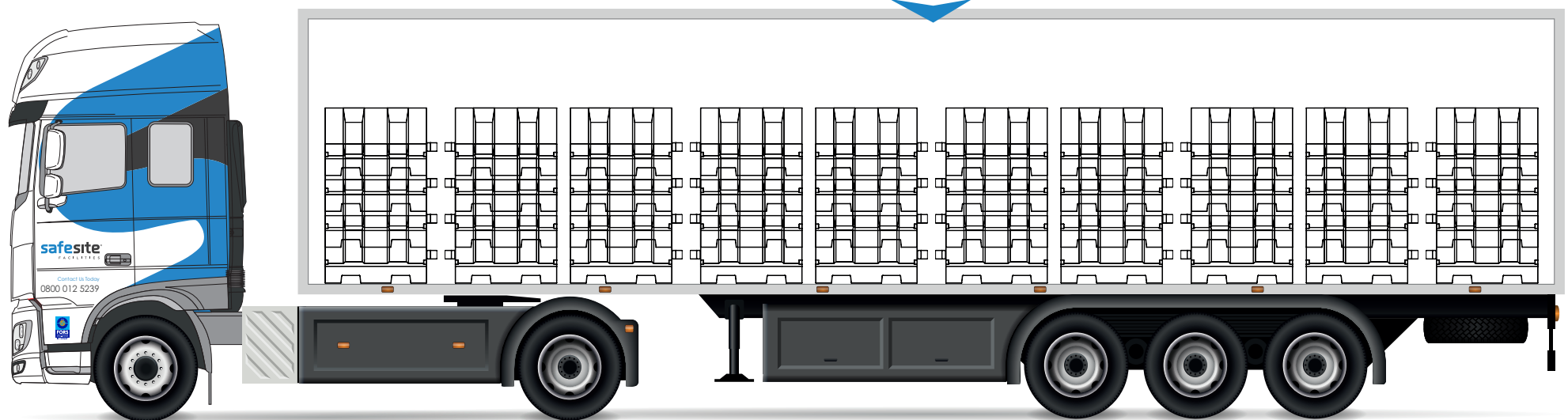


Diagram below demonstrates the correct loading formation when transporting a maximum load of 240 barriers, onto a curtain sided arctic trailer.

View from the side of the trailer





Unit 1, Martello Enterprise Centre, Courtwick Lane,
Littlehampton, West Sussex, BN17 7PA



info@safesitefacilities.co.uk



www.safesitefacilities.co.uk

The product information included in this document is correct at the time of print. Some of the details and specifications featured may change without prior notice. Please visit our website or contact our sales team for the most up-to-date information.