



650mm Flood Defence Barrier

Specification Sheet
FLS180005

26/01/26

safesite[®]
F A C I L I T I E S



650mm Flood Defence Barrier

Our 650 mm Flood Defence Barrier offers rapid, reliable protection for commercial, industrial, and residential sites at risk of flooding.

Designed with the same proven engineering as our larger systems, the 650 mm unit provides a lower-height option ideal for doorways, vehicle entrances, pathways, and areas where full-height barriers may be unnecessary.

Lightweight when empty but exceptionally stable once filled, these modular units are easy to transport, fast to deploy, and strong enough to withstand rising floodwater and high winds. The interlocking system allows you to build a continuous water-resistant wall of any length, giving you flexible protection tailored to your site.



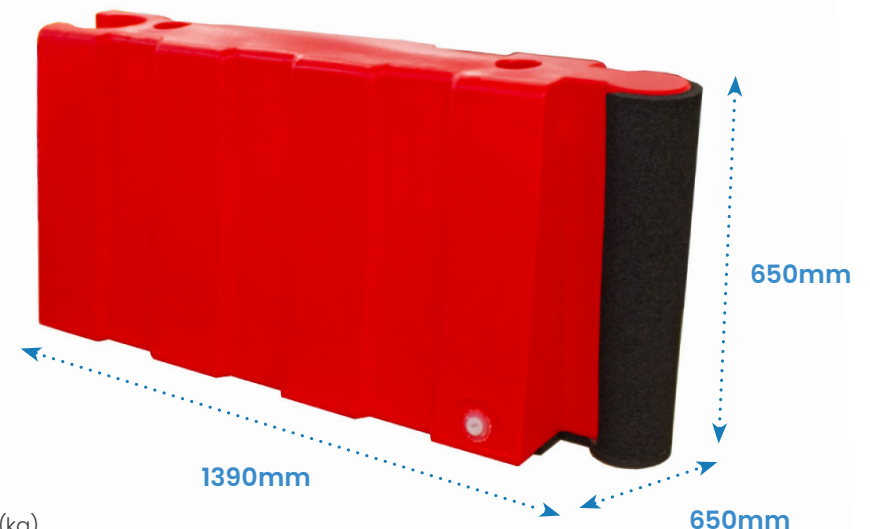
650mm Flood Defence Barriers in situ



650mm Flood Defence Barriers connected

Key Features

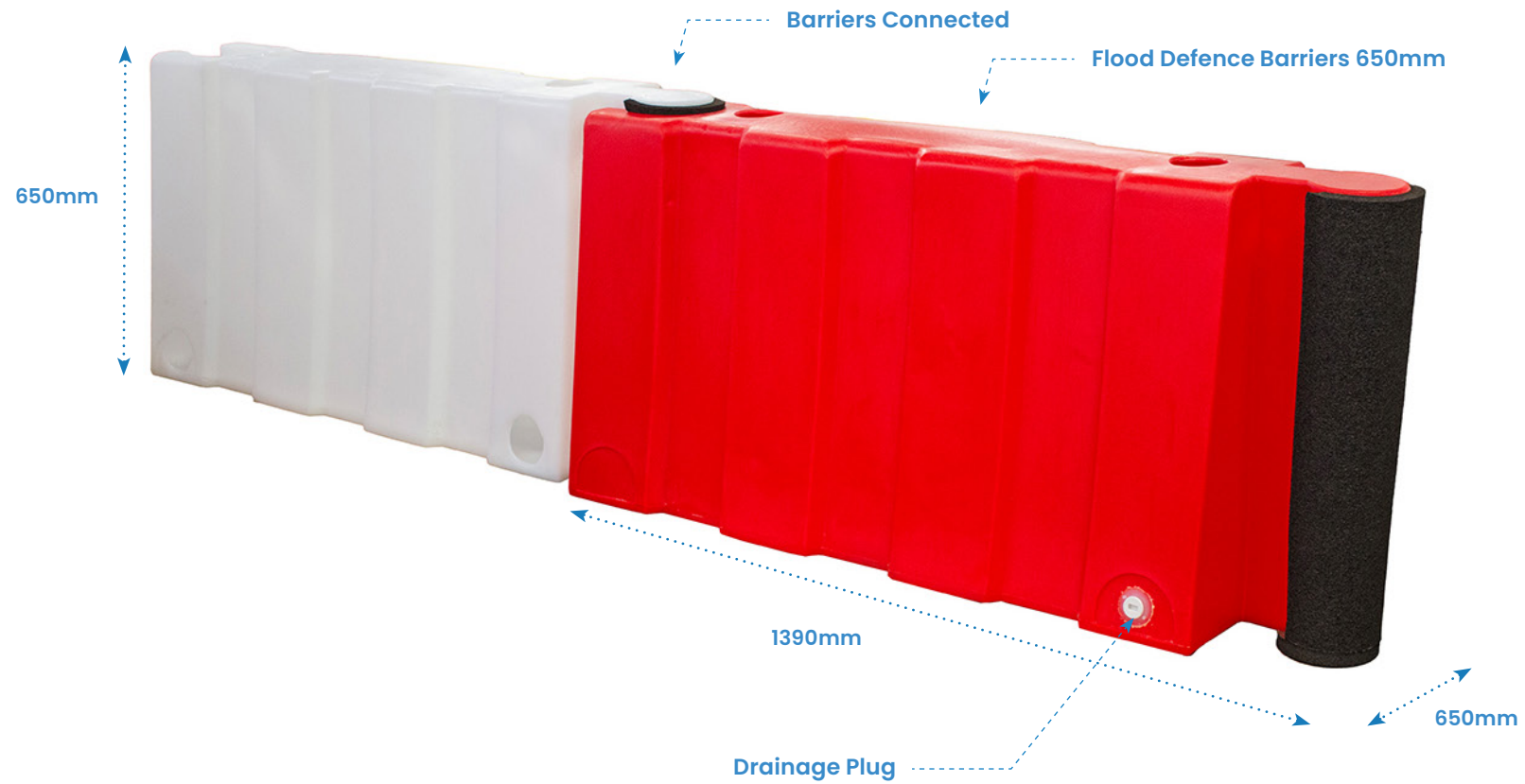
- Self-filling design which automatically fills with rising water
- Interlocking system connecting units to create a continuous flood barrier
- Reusable and sustainable for future deployment
- 900mm Lower Connection Key needed to connect Flood Defence Barriers 650mm to multi hub connectors
- Multi hub connectors allow for flexible layouts
- Secure and stable even in adverse weather conditions



Description	Size (mm)	Weight (kg)	Filled Weight (kg)
FLS180005 – Flood Defence Barrier 650mm	H650 x W1390 x D650	19	309
FLS180030 – Flood Defence Barrier 900mm Multi Hub	H900 x W720 x D402	18	188
FLS180105 – 900mm Lower Connection Key	H605 x W400 x D160	15	–
FLS180120 – Lower Key Handle	H400 x W140 x D67	3	–



Technical Details



650mm Flood Defence Barriers connected



Installation parts

Flood Defence Barrier 650mm

Standard part

1 **900mm Multi Hub**
FLS180030



Size (mm)	Weight (kg)
H900 x W720 x D402	18

Standard part

2 **900mm Lower Connection Key**
FLS180105



Size (mm)	Weight (kg)
H605 x W400 x D160	15

Accessory

3 **Lower Key Handle**
FLS180120



Size (mm)	Weight (kg)
H400 x W140 x D67	3