



## Bi-Folding Vehicle Access Gate

---

Specification Sheet

WFS152190

08/07/25

**safesite**<sup>®</sup>  
F A C I L I T I E S



# Bi-Folding Vehicle Access Gate

Our bi-fold gate is designed for seamless integration with our temporary water-filled barrier systems, providing a secure and efficient access solution for construction sites and street work sites.

The gate features a foldable design that reduces storage and transport requirements. Constructed from galvanised steel with a powder-coated finish, it offers enhanced corrosion resistance. The 5mm steel hinge assembly ensures durability under frequent use.

Designed to attach securely to water-filled barrier fencing systems, such as RB22, GB2, and Bison Barrier, the gate utilises industry-standard heavy-duty fencing couplers for a reliable connection.

The bi-fold gate is constructed from galvanised steel with a powder-coated finish. The gate can pivot up to 180°, depending on the system configuration, and the inner gate panels can fold back 180° onto themselves for compact storage. It is designed with replaceable parts and is fully recyclable.

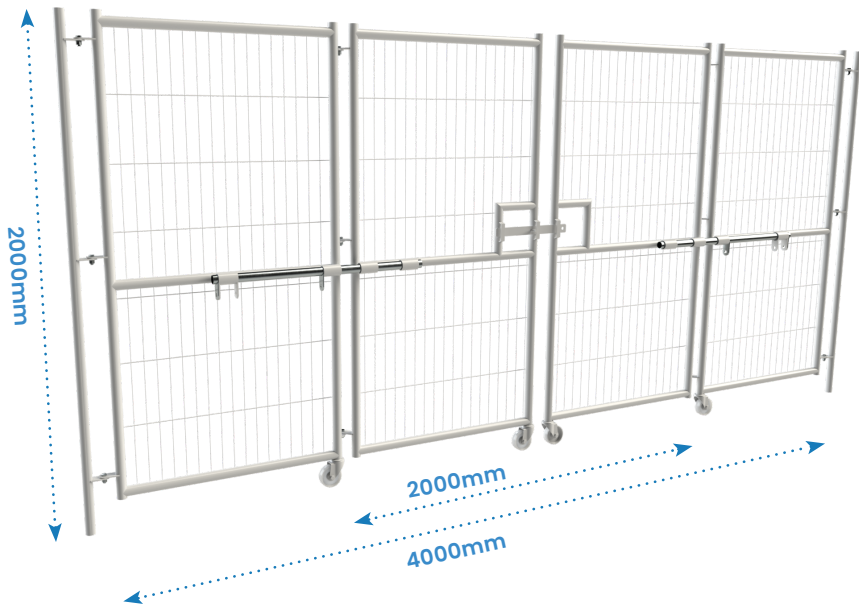
This gate is ideal for securing construction sites, managing road and traffic access, and controlling entry points at events. When integrated with temporary water-filled barriers, it creates a secure, functional, and adaptable perimeter for various site requirements.

## Bi-Folding Vehicle Access Gate Specification

Description	Size (mm)	Weight (kg)
WFS152190 - 4m Bi-Folding Gate	H2000 x W4000 x D40	68
WFS152195 - Bi-Folding Gate Standard Adaption Pole	H2000 x W103 x D40	4

## Key Features

- Ideal for construction site vehicle access.
- Space-efficient design, ideal for limited spaces.
- Rapid installation and easy compact storage.
- Durable construction fully galvanised and powder coated finish.
- Compatible with water-filled barriers and temporary fencing.
- Accommodates standard padlocks for reliable locking.
- Versatile access suitable for vehicles and pedestrians.



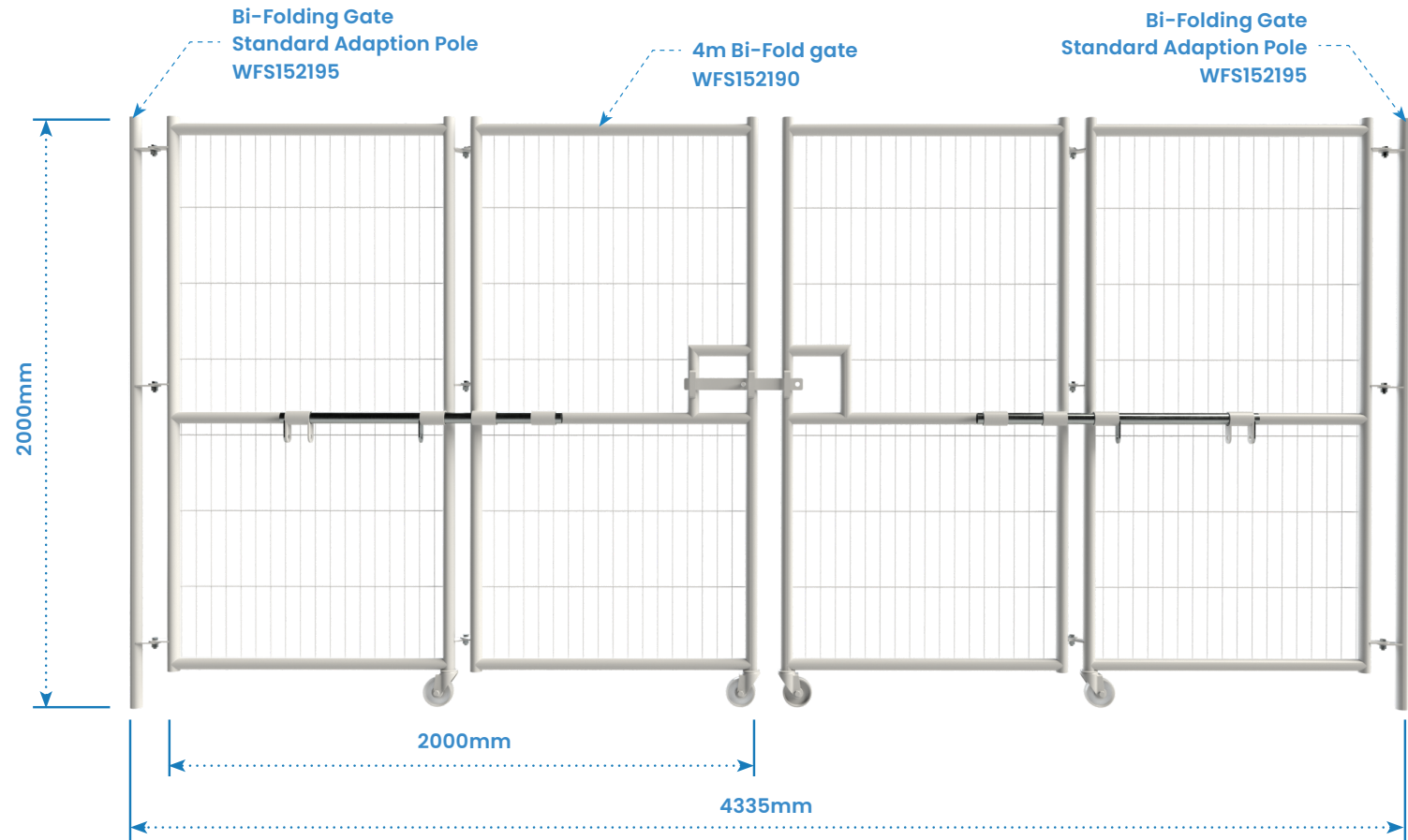


## Technical Details

### Bi-Folding Vehicle Access Gate Standard Setup

Use this set up when attaching to the GB2, Bison Standard, and 2m Mesh Fencing. For water filled barriers additional adaption flags are needed based on the system used.

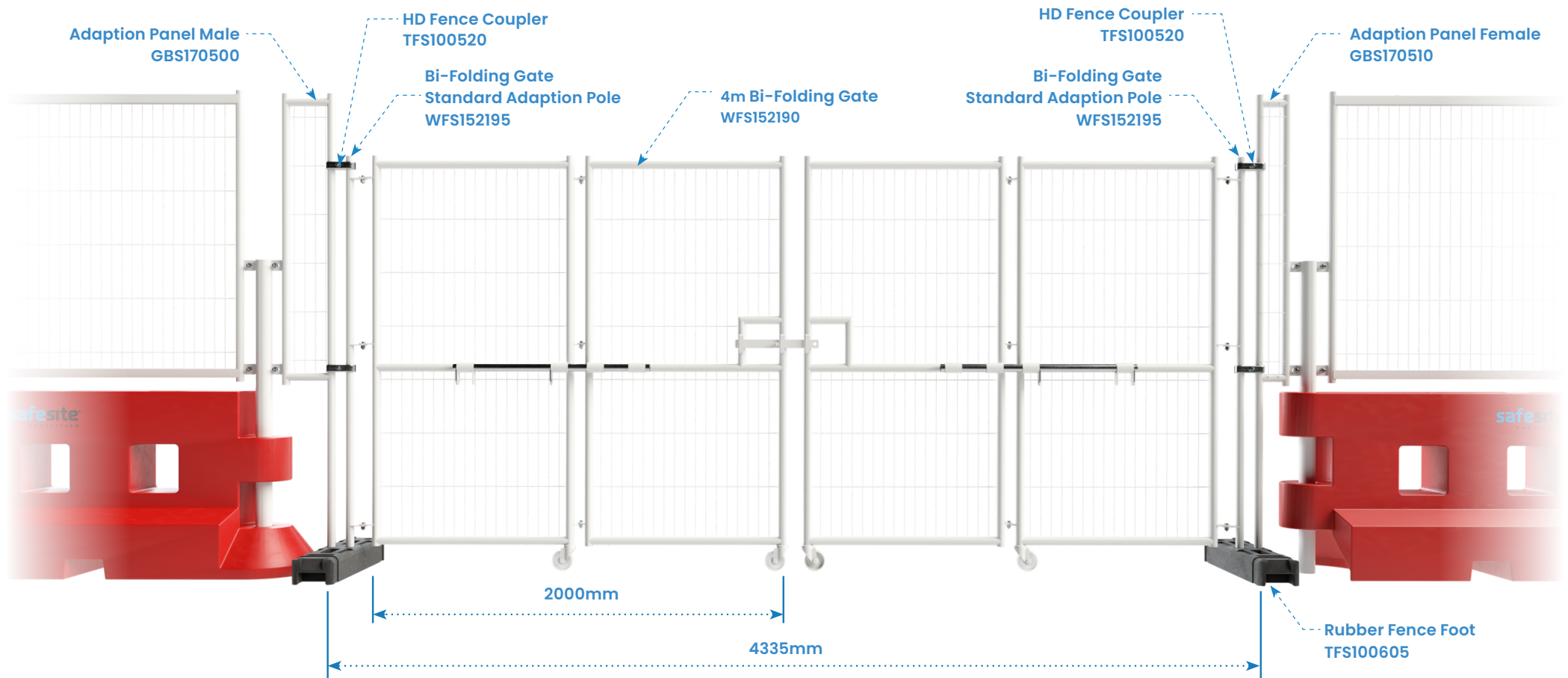
Attach using 4 Heavy Duty Couplers (TFS100520), and 2 Rubber Fence Feet (TFS100605) where possible for maximum stability.





## Technical Details

### Bi-Folding Vehicle Access Gate GB2 Setup

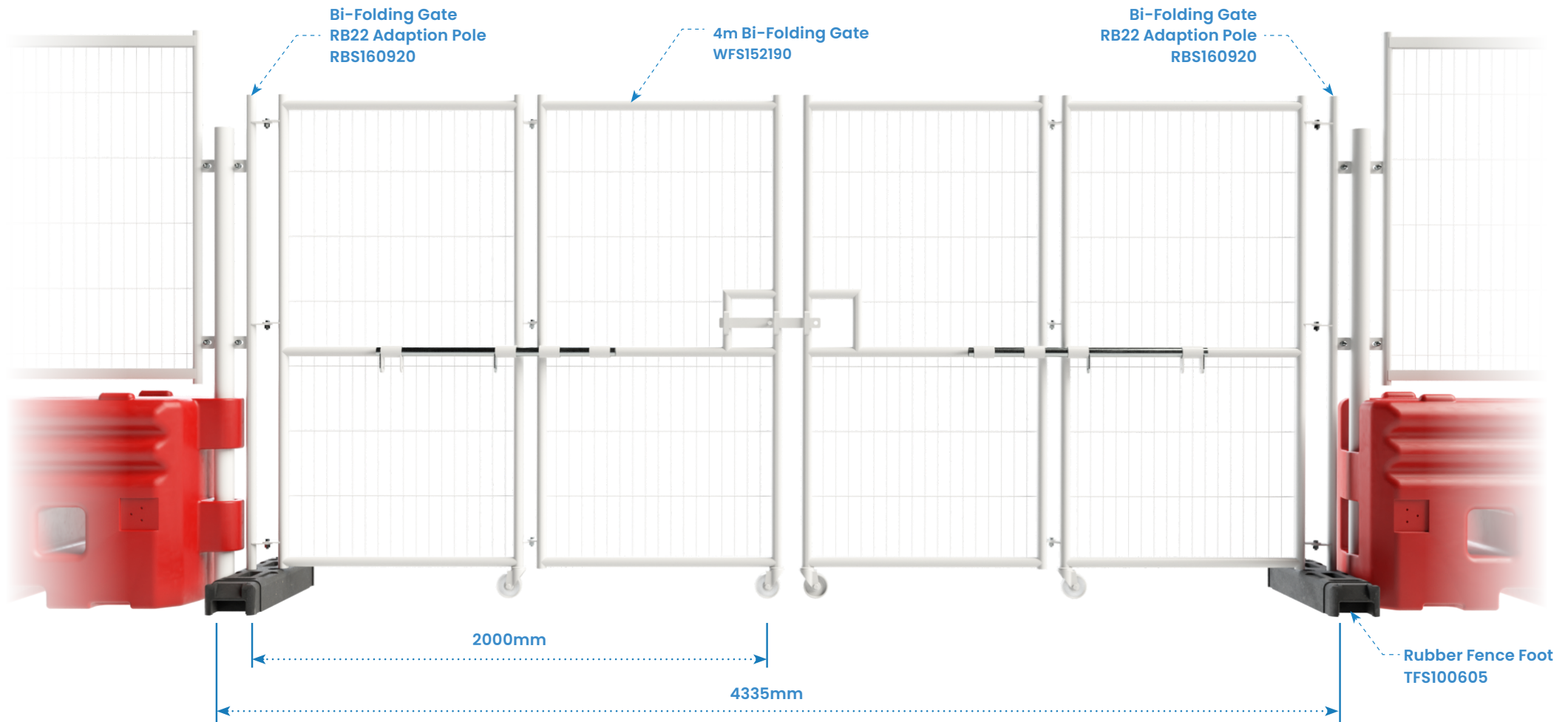






## Technical Details

### Bi-Folding Vehicle Access Gate RB22 Setup





# Installation parts

## Bi-Folding Vehicle Access Gate – Measurements in mm

**Standard parts:** Please see below pictures and quantities of additional parts you will receive with each Bi-Folding Gate, the parts below are an essential safety requirement when installing the Bi-Folding Gate correctly.

1

### M14 x 30mm Bolts, Nuts & Washers for the gate hinges

GSFS1203

Quantity: 12 per Gate

*Replacement parts available if needed*



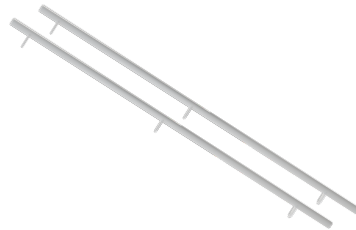
Size (mm)	Weight (kg)
W14 x D30	-

2

### Standard Adaption Pole

WFS152195

Quantity: 2 per Gate



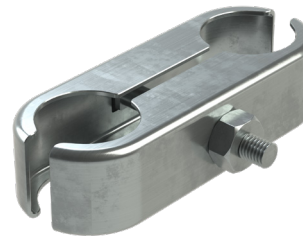
Size (mm)	Weight (kg)
H2000 x W103 x D40	4

3

### HD Gripper Fence Coupler

TFS100520

Quantity: 4 per Gate



Size (mm)	Weight (kg)
H55 x W140 x D35	0.4

4

### Rubber Fence Feet

TFS100605

Quantity: 2 per Gate



Size (mm)	Weight (kg)
H120 x W770 x D190	13.5

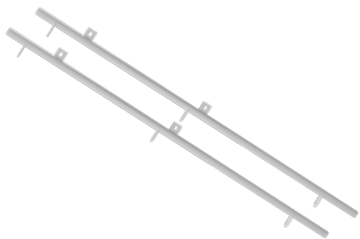
**Accessory parts:** The following accessories are required when attaching to the RB22 System. Please contact our sales team for more information.

1

### RB22 Adaption Pole

RBS160920

Quantity: 2 per Gate



Size (mm)	Weight (kg)
H2000 x W153 x D40	4

2

### Qty 4: M10 x 40mm bolts & 8 washers

Quantity: 4 per Gate



Size (mm)	Weight (kg)
W14 x D30	-