

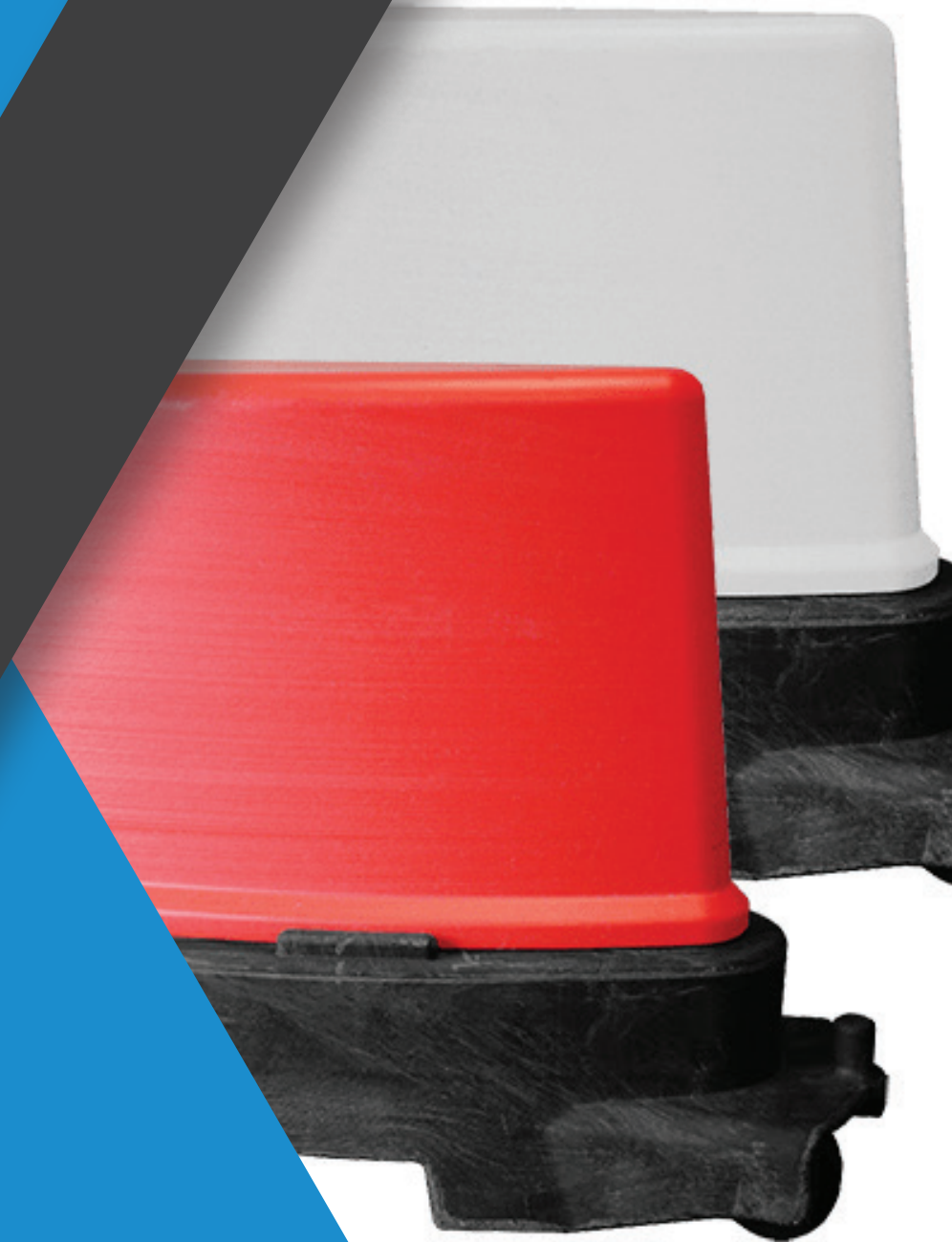


# **safesite**<sup>®</sup>

F A C I L I T I E S

Road Runner

*SPECIFICATION SHEET*



# Road Runner

The Road Runner Self-Weighted Barrier offers a speedy, safe and extremely robust way to create temporary flow paths, barriers and delineation systems.

One of its special features is a design which allows easy transportation for installation or removal, yet offers extremely robust protection against high impact.

Manufactured from Virgin LLDPE (top) and recycled PVC (base) and with an ergonomic design which allows easy transportation, installation and storage, Road Runner units are self-weighted, so there's no need for secondary filling of water or sand. A fully moulded interlocking pin on the barrier tail connects with the underside of any adjacent barrier unit, to create lanes.

Units are available with highly visible top section colours of white or red and base section in black as standard.

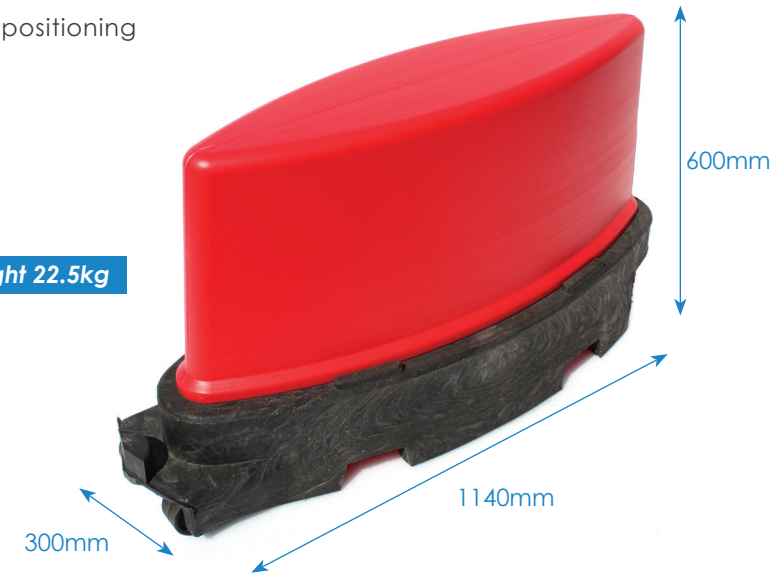
## Road Runner Barrier Specification

Length	Width	Height	Weight
1140mm	300mm	600mm	22.5kg

## Key Features

- Robust construction to withstand high impact
- Relatively lightweight, with wheels for easy movement by one person
- Speedy installation, assembly and repositioning
- No water or sand ballast required
- Ergonomic design
- Non-permanent fixing
- Available in red and white
- Interlocking design
- Fork lift slots in base
- Available for sale or hire
- UK nationwide delivery

**Weight 22.5kg**



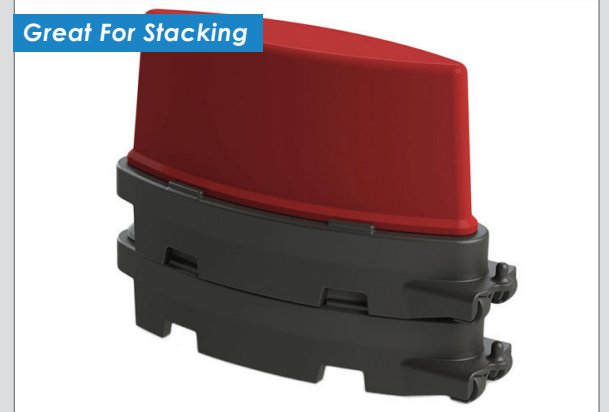
★ Trustpilot



## Wheels For Easy Manoeuvring



## Great For Stacking

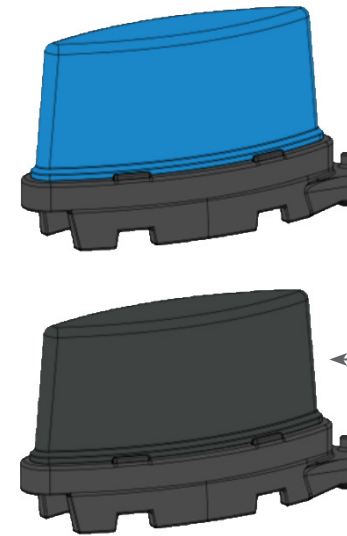


## Road Runner Customisation

The Road Runner can be fully customised to suit your companies brand.

When ordering over 200 barriers we are able to offer the option to customise the colour of your Road Runners. This can be utilised to further your companies brand and identification, using a web based colour code as shown on the right we can generate the correct pantone to colourize your barriers.

### Company Branding



**safesite**<sup>®</sup>  
F A C I L I T I E S

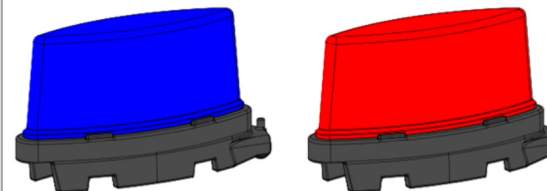


#1b87c9

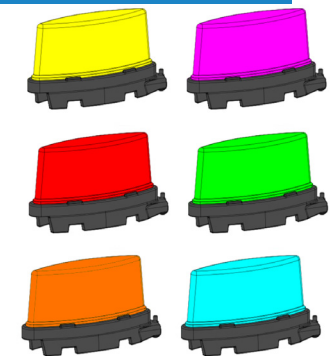


3f4442

### Brand Colours



### Various Coloured Road Runners



# Road Runner Wind Loading

All temporary traffic barriers must be able to withstand three different classes of wind speeds with the use of a ballast.

The standard BS 8442:2015 states the three classes as the following - Class A: 26.3 m/s (58 mph), Class B: 17.6 m/s (39 mph), Class C: 8.7 m/s (19 mph).

The Road Runner system was tested under strict conditions at the Mira Full Scale Wind Tunnel to determine what level wind speeds the barrier can withstand.

## 1 0kg Ballast Weight

### 36 mph

Wind speed withstood,  
not to failure point.



**MIRA** CLASS C - PASSED

## 2 10kg Ballast Weight

### 49 mph

Wind speed withstood,  
not to failure point.



**MIRA** CLASS B - PASSED

## 3 50kg Ballast Weight

### 68 mph

Wind speed withstood,  
not to failure point.



**MIRA** CLASS A - PASSED



# Road Runner In Action

With additional ballast weights of 10kg and 50kg, the barriers demonstrated wind resistance of 49 mph and 68 mph respectively.

With their innovative 'hidden' wheels design, each barrier can be easily moved once tilted sufficiently to allow the wheels to work. This happens only if the barrier is tilted - something which is impossible when the barriers are interlocked.

Road Runner units are designed to be stacked when in storage, and can be stacked up to 10 high.

Create Temporary Flow Paths



Fully Moulded Interlocking Pin

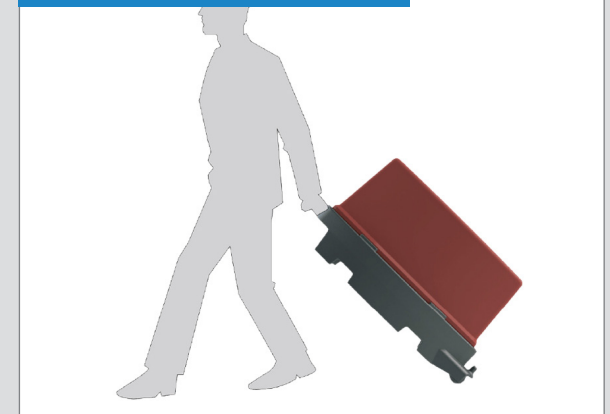


Road Runner On Site

Self-Weighted Barrier



Tilted To Allow Wheels To Work



# Technical Details

Weight 22.5kg

Width  
1140mm

Height  
600mm

Handle for  
portability

Wheels for  
manoeuvring

Fork-lift slots

