

Interlocking Concrete Legato Blocks

Specification Sheet
CBS120000

27/04/26

safesite[®]
F A C I L I T I E S



Interlocking Concrete Legato Blocks

Legato™ (also known as Lego) concrete blocks are high strength interlocking concrete blocks that can be used to manage vehicle and pedestrian access at your premises as well as being ideal for building custom storage bays, partition walls, security barriers and much more.

From the Italian meaning ‘tied together’, Legato™ interlocking concrete blocks are highly resilient and robust providing the same advantages as in-situ concrete without the cost, inflexibility and interruption of having to cast on site.

Created only from Portland cement and locally-sourced aggregates (and containing no reinforced steel, recycled or waste materials), these high strength blocks are manufactured with 50N/mm² concrete and have their own cast-in lifting pins. Each standard block produces 1.28m² of fire resistant wall and is incredibly durable. Quick and easy to install, Legato™ concrete blocks provide a simple solution to a number of long-term or temporary projects.



Forklift Lifting Clutch attached



Legato Blocks on site

Key Features

- Various sizes available
- 50N/mm² concrete
- Resilient and robust Lego blocks
- Quick and easy to install
- Lifting anchors cast into blocks
- Delivery and install available nationwide

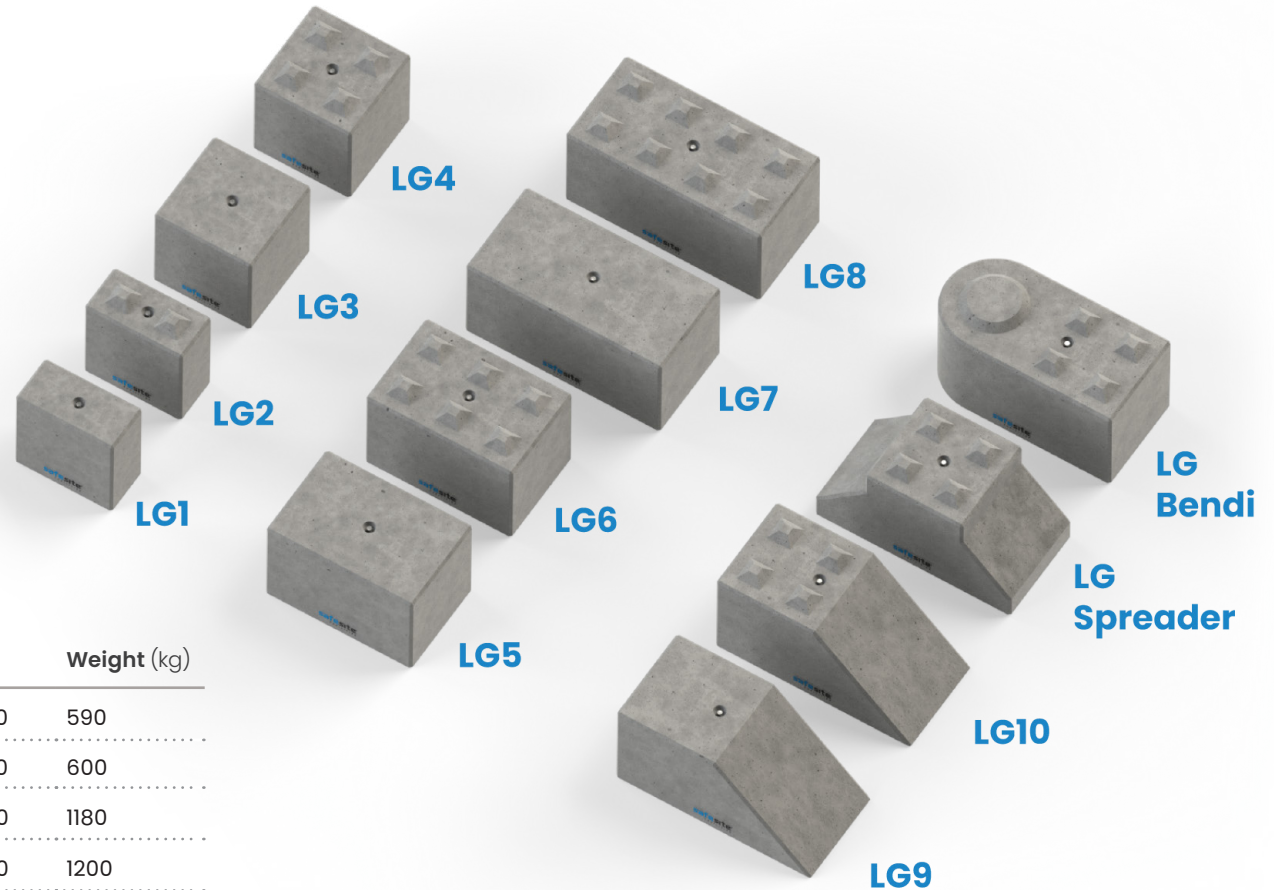
Description	Size (mm)	Weight (kg)
CBSI20000 - LG1 Legato Block (Smooth)	H800 x W400 x D800	590
CBSI20010 - LG2 Legato Block	H800 x W400 x D800	600
CBSI20020 - LG3 Legato Block (Smooth)	H800 x W800 x D800	1180
CBSI20030 - LG4 Legato Block	H800 x W800 x D800	1200
CBSI20040 - LG5 Legato Block (Smooth)	H800 x W1200 x D800	1775
CBSI20050 - LG6 Legato Block	H800 x W1200 x D800	1800
CBSI20060 - LG7 Legato Block (Smooth)	H800 x W1600 x D800	2365
CBSI20070 - LG8 Legato Block	H800 x W1600 x D800	2400
CBSI20080 - LG9 Legato Block (Sloped Smooth)	H800 x W1600 x D800	1765
CBSI20090 - LG10 Legato Block (Sloped)	H800 x W1600 x D800	1800
CBSI20150 - LG Spreader	H800 x W1600 x D800	1800
CBSI20180 - LG Bendi	H800 x W1590 x D800	2240
CBSI29905 - 2.5 Tonne Lifting Clutch		
CBSI29900 - 5 Tonne Lifting Clutch		



Interlocking Concrete Legato Blocks Options

Legato Blocks provide a quick resolution for a number of projects, requiring substantial solid walls.

Our reinforced concrete Legato Blocks are ideal for building custom storage bays, partition walls, security blocks and retaining walls, and can be employed to ensure successful management of vehicular and pedestrian access at your commercial or residential premises.



Description	Size (mm)	Weight (kg)
CBS120000 - LG1 Legato Block (Smooth)	H800 x W400 x D800	590
CBS120010 - LG2 Legato Block	H800 x W400 x D800	600
CBS120020 - LG3 Legato Block (Smooth)	H800 x W800 x D800	1180
CBS120030 - LG4 Legato Block	H800 x W800 x D800	1200
CBS120040 - LG5 Legato Block (Smooth)	H800 x W1200 x D800	1775
CBS120050 - LG6 Legato Block	H800 x W1200 x D800	1800
CBS120060 - LG7 Legato Block (Smooth)	H800 x W1600 x D800	2365
CBS120070 - LG8 Legato Block	H800 x W1600 x D800	2400
CBS120080 - LG9 Legato Block (Sloped Smooth)	H800 x W1600 x D800	1765
CBS120090 - LG10 Legato Block (Sloped)	H800 x W1600 x D800	1800
CBS120150 - LG Spreader	H800 x W1600 x D800	1800
CBS120180 - LG Bendi	H800 x W1590 x D800	2240



Legato Blocks in Action

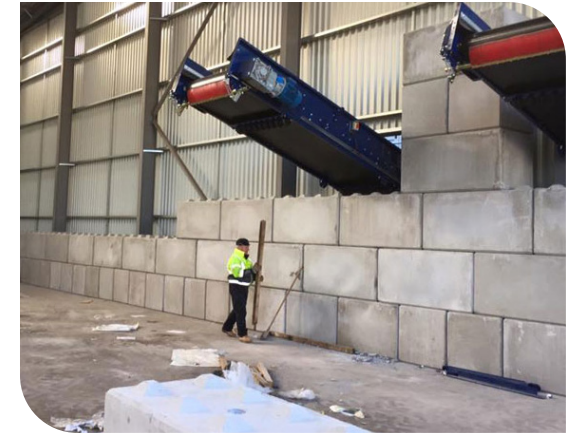
Here are some examples of our heavy duty Legato Blocks in action!

As you will see from the examples to the right, the Legato Blocks are versatile enough to be positioned in a variety of layouts, and also stacked in such a way to allow gaps for machinery such as the industrial conveyor belts pictured to the right.

Utilizing the Legato Blocks Lego style interlocking formation, heavy duty long lasting walls can be constructed in a fraction of the time need to build a bricks and mortar equivalent.



Solid Legato Column Construction



Blocks Form Gap For Agricultural Conveyor Belts



Legato Wall Being Constructed



Legato Blocks Form Dividing Wall

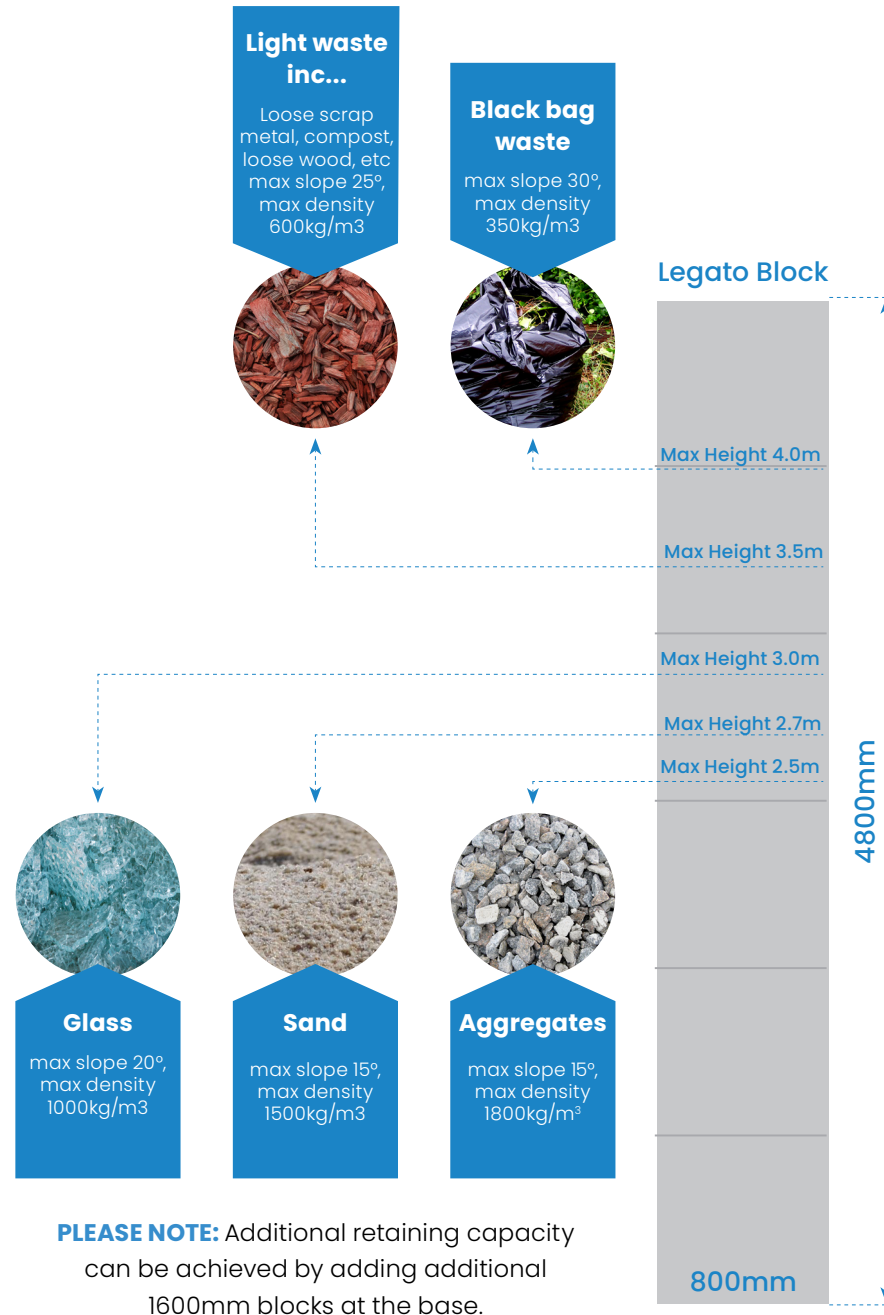


Loading Capacity - Standard Base

Maximum height and volume capacities for various materials.

The diagram to the right demonstrates the different loading capacities depending on the type of material stored against interlocked Legato Block walls.

It is very important to take into consideration the maximum height, slope angle and kg/m³ as detailed to the right when loading materials against a Legato structure.





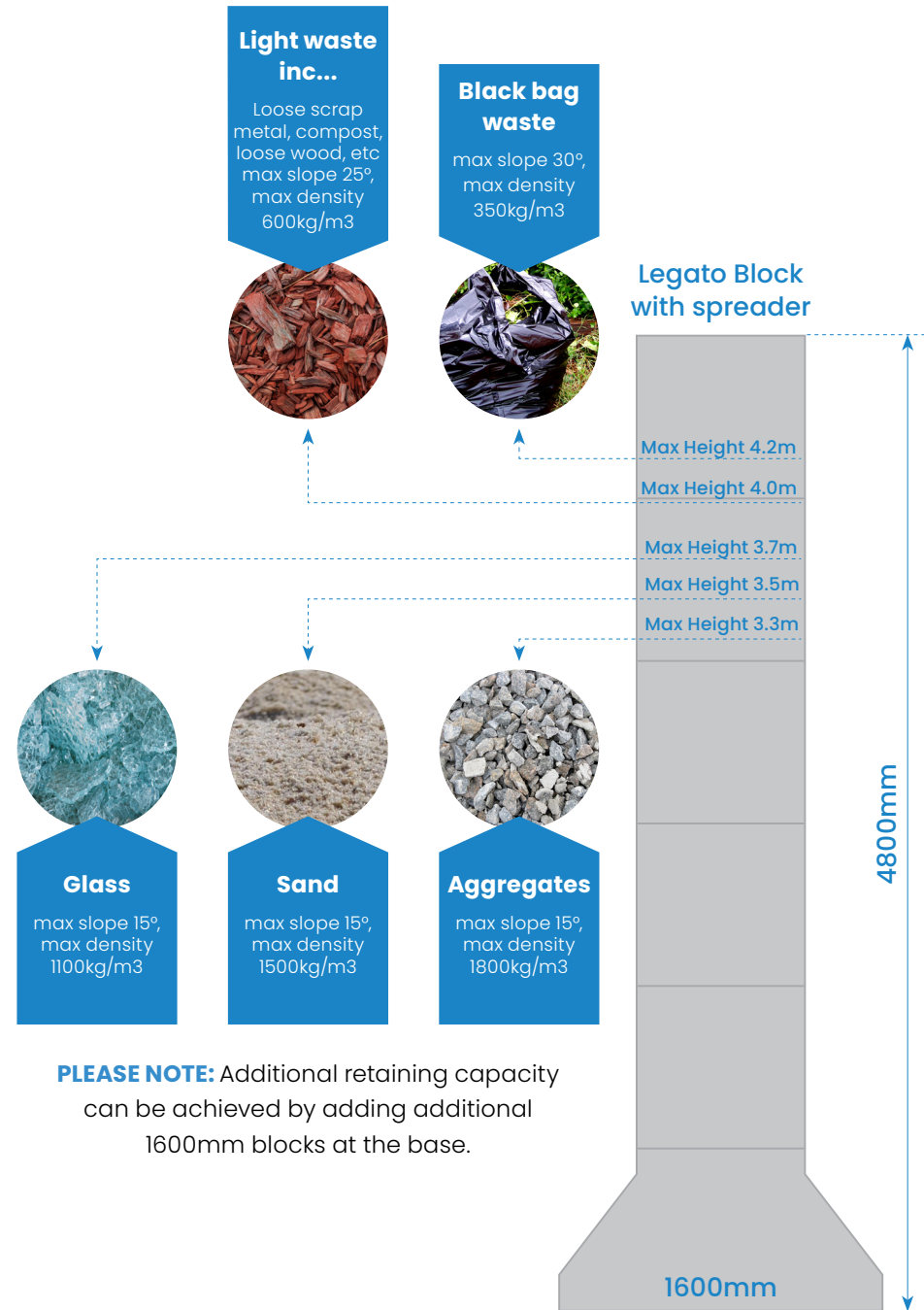
Loading Capacity – Spreader Base

Maximum height and volume capacities for various materials.

The diagram to the right demonstrates the different loading capacities depending on the type of material stored against interlocked Legato Block walls.

It is very important to take into consideration the maximum height, slope angle and kg/m³ as detailed to the right when loading materials against a Legato structure.

As you will notice when comparing this diagram and the diagram overleaf, the wall with a spreader base block can withstand a higher stacking load.





Technical Details

LGI block detailed specification and measurements..



$\varnothing 94$ mm dia semi-spherical recess in gravitational centre of block for pin anchor.
(pin anchor is rated to 5.0 tonnes with a safety factor of 3).

1. Handling

- Unit Volume / Weight

Unit Ref	Volume (m ³)	Weight (kg)
LG1	0.250	590

- Weight is based on 2350 kg/m³
- Lifting system is by means of a 180mm long spherical pin anchor rated at 5.0 tonnes with a safety factor of 3.
- Lifting is achieved by use of a 5.0t rated pin anchor ring clutch or combination ring clutch only and should comply with the Lifting Operation & Lifting Equipment Regulations 1998 (LOLER).

2. Concrete

- Characteristic 28 day cube strength = 50 N/mm² min.
- Concrete is Class A1 Fire Resistant in accordance with clause 4.3.4.4 of EN 13369.

3. Manufacture

- Manufactured to : BS EN 13369 : 2013
- Tolerances to : BS EN 13670 : 2009

4. Physical & Chemical Properties

- Appearance : Grey in Colour
- Other Chemical Properties : Not Applicable

5. Design

- Design Life : >100 years

6. Manufacture Tolerances

- Length ± 5 mm
- Width ± 5 mm
- Height ± 5 mm

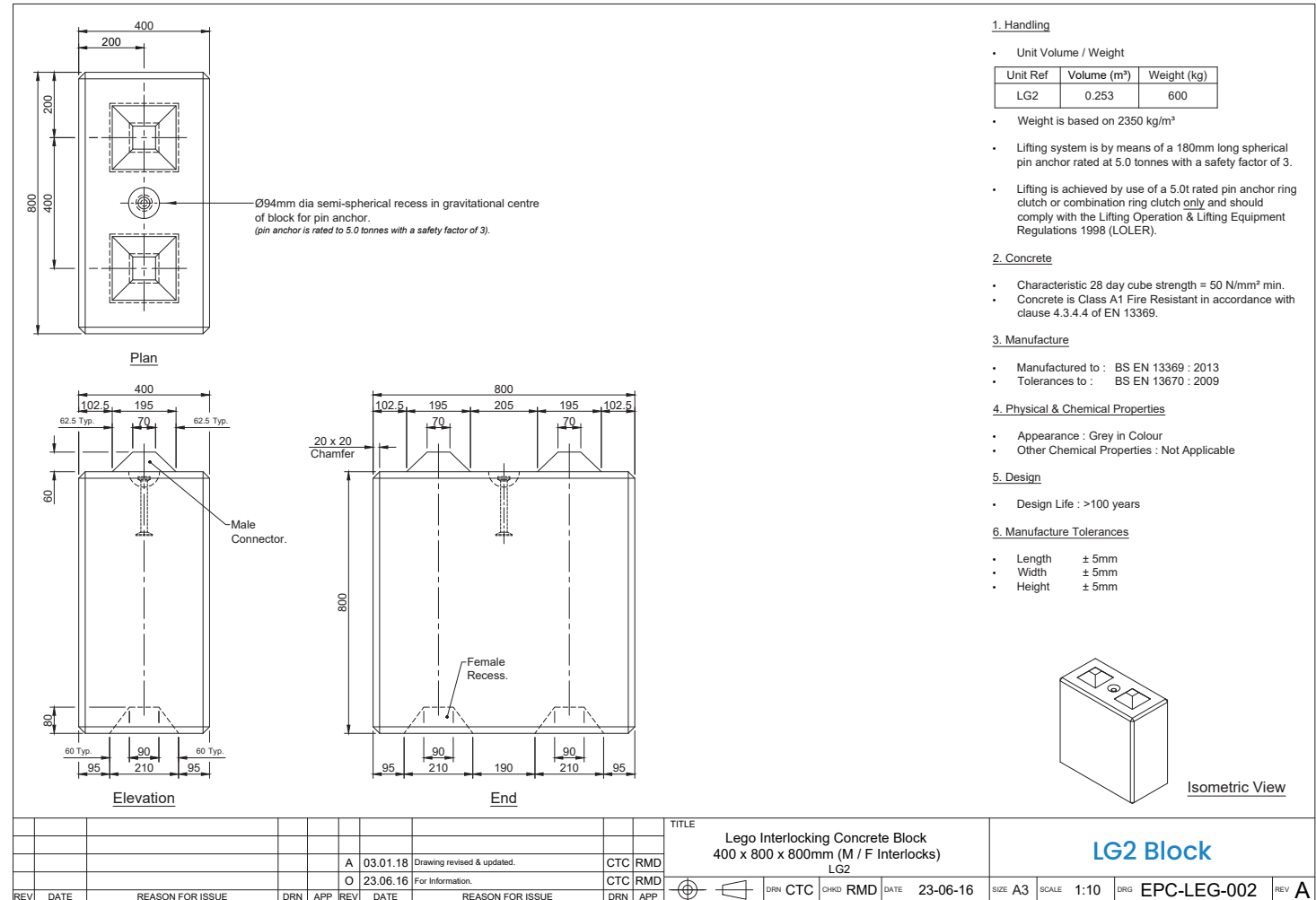
Isometric View

										TITLE		Lego Interlocking Concrete Block 400 x 800 x 800mm (F Interlocks) LG1		LG1 Block									
										A		03.01.18		Drawing revised & updated.		CTC RMD							
										O		23.06.16		For Information.		CTC RMD							
REV	DATE	REASON FOR ISSUE	DRN	APP	REV	DATE	REASON FOR ISSUE	DRN	APP	DRN	CTC	CHKD	RMD	DATE	23-06-16	SIZE	A3	SCALE	1:10	DRG	EPC-LEG-001	REV	A



Technical Details

LG2 block detailed specification and measurements..





Technical Details

LG3 block detailed specification and measurements..



Plan

Elevation

End

Isometric View

Ø94mm dia semi-spherical recess in gravitational centre of block for pin anchor.
 (pin anchor is rated to 5.0 tonnes with a safety factor of 3).

1. Handling

- Unit Volume / Weight

Unit Ref	Volume (m ³)	Weight (kg)
LG3	0.502	1185

- Weight is based on 2350 kg/m³
- Lifting system is by means of a 180mm long spherical pin anchor rated at 5.0 tonnes with a safety factor of 3.
- Lifting is achieved by use of a 5.0t rated pin anchor ring clutch or combination ring clutch only and should comply with the Lifting Operation & Lifting Equipment Regulations 1998 (LOLER).

2. Concrete

- Characteristic 28 day cube strength = 50 N/mm² min.
- Concrete is Class A1 Fire Resistant in accordance with clause 4.3.4.4 of EN 13369.

3. Manufacture

- Manufactured to : BS EN 13369 : 2013
- Tolerances to : BS EN 13670 : 2009

4. Physical & Chemical Properties

- Appearance : Grey in Colour
- Other Chemical Properties : Not Applicable

5. Design

- Design Life : >100 years

6. Manufacture Tolerances

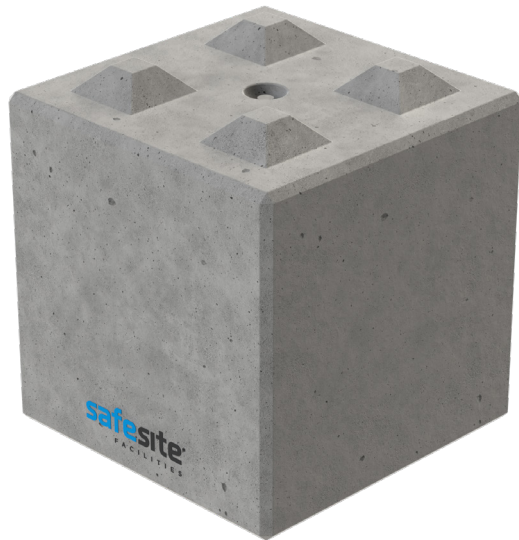
- Length ± 5mm
- Width ± 5mm
- Height ± 5mm

										TITLE		LG3 Block													
										Lego Interlocking Concrete Block 800 x 800 x 800mm (F Interlocks) LG3															
REV	DATE	REASON FOR ISSUE	DRN	APP	REV	DATE	REASON FOR ISSUE	DRN	APP	CTC	RMD	DRN	CTC	CHKD	RMD	DATE	23-06-16	SIZE	A3	SCALE	1:10	DRG	EPC-LEG-003	REV	A



Technical Details

LG4 block detailed specification and measurements..



Plan

800 x 800 mm overall dimensions. 200 mm spacing between interlocking points. 400 mm spacing between the central hole and the corners.

Elevation

800 mm height. 60 mm top thickness. 20 x 20 Chamfer on the top edges. Male Connector on top, Female Recess on bottom.

End

800 mm width. 20 x 20 Chamfer on the top edges. Female Recess on the bottom.

Annotations: $\varnothing 94$ mm dia semi-spherical recess in gravitational centre of block for pin anchor. (pin anchor is rated to 5.0 tonnes with a safety factor of 3).

1. Handling

- Unit Volume / Weight

Unit Ref	Volume (m ³)	Weight (kg)
LG4	0.507	1200

- Weight is based on 2350 kg/m³
- Lifting system is by means of a 180mm long spherical pin anchor rated at 5.0 tonnes with a safety factor of 3.
- Lifting is achieved by use of a 5.0t rated pin anchor ring clutch or combination ring clutch only and should comply with the Lifting Operation & Lifting Equipment Regulations 1998 (LOLER).

2. Concrete

- Characteristic 28 day cube strength = 50 N/mm² min.
- Concrete is Class A1 Fire Resistant in accordance with clause 4.3.4.4 of EN 13369.

3. Manufacture

- Manufactured to : BS EN 13369 : 2013
- Tolerances to : BS EN 13670 : 2009

4. Physical & Chemical Properties

- Appearance : Grey in Colour
- Other Chemical Properties : Not Applicable

5. Design

- Design Life : >100 years

6. Manufacture Tolerances

- Length \pm 5mm
- Width \pm 5mm
- Height \pm 5mm

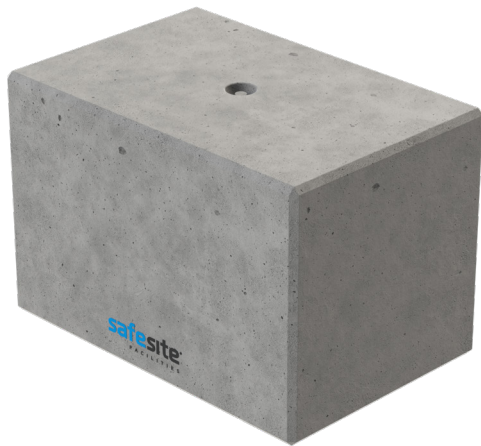
Isometric View

										TITLE Lego Interlocking Concrete Block 800 x 800 x 800mm (M / F Interlocks) LG4				LG4 Block															
										CTC RMD		CTC RMD		DRN CTC		CHKD RMD		DATE		23-06-16		SIZE A3		SCALE 1:10		DRG EPC-LEG-004		REV A	
REV	DATE	REASON FOR ISSUE	DRN	APP	REV	DATE	REASON FOR ISSUE	CTC	RMD	CTC	RMD	DRN	CTC	CHKD	RMD	DATE	SIZE	SCALE	DRG	REV									
					A	03.01.18	Drawing revised & updated.																						
					O	23.06.16	For Information.																						



Technical Details

LG5 block detailed specification and measurements..



Plan

Elevation

End

Isometric View

Ø94mm dia semi-spherical recess in gravitational centre of block for pin anchor.
(pin anchor is rated to 5.0 tonnes with a safety factor of 3).

Female Recess.

1. Handling

- Unit Volume / Weight

Unit Ref	Volume (m³)	Weight (kg)
LG5	0.754	1775

- Weight is based on 2350 kg/m³
- Lifting system is by means of a 180mm long spherical pin anchor rated at 5.0 tonnes with a safety factor of 3.
- Lifting is achieved by use of a 5.0t rated pin anchor ring clutch or combination ring clutch only and should comply with the Lifting Operation & Lifting Equipment Regulations 1998 (LOLER).

2. Concrete

- Characteristic 28 day cube strength = 50 N/mm² min.
- Concrete is Class A1 Fire Resistant in accordance with clause 4.3.4.4 of EN 13369.

3. Manufacture

- Manufactured to : BS EN 13369 : 2013
- Tolerances to : BS EN 13670 : 2009

4. Physical & Chemical Properties

- Appearance : Grey in Colour
- Other Chemical Properties : Not Applicable

5. Design

- Design Life : >100 years

6. Manufacture Tolerances

- Length ± 5mm
- Width ± 5mm
- Height ± 5mm

REV	DATE	REASON FOR ISSUE	DRN	APP	REV	DATE	REASON FOR ISSUE	DRN	APP	
					A	03.01.18	Drawing revised & updated.		CTC	RMD
					O	23.06.16	For information.		CTC	RMD

TITLE
**Lego Interlocking Concrete Block
1200 x 800 x 800mm (F Interlocks)
LG5**

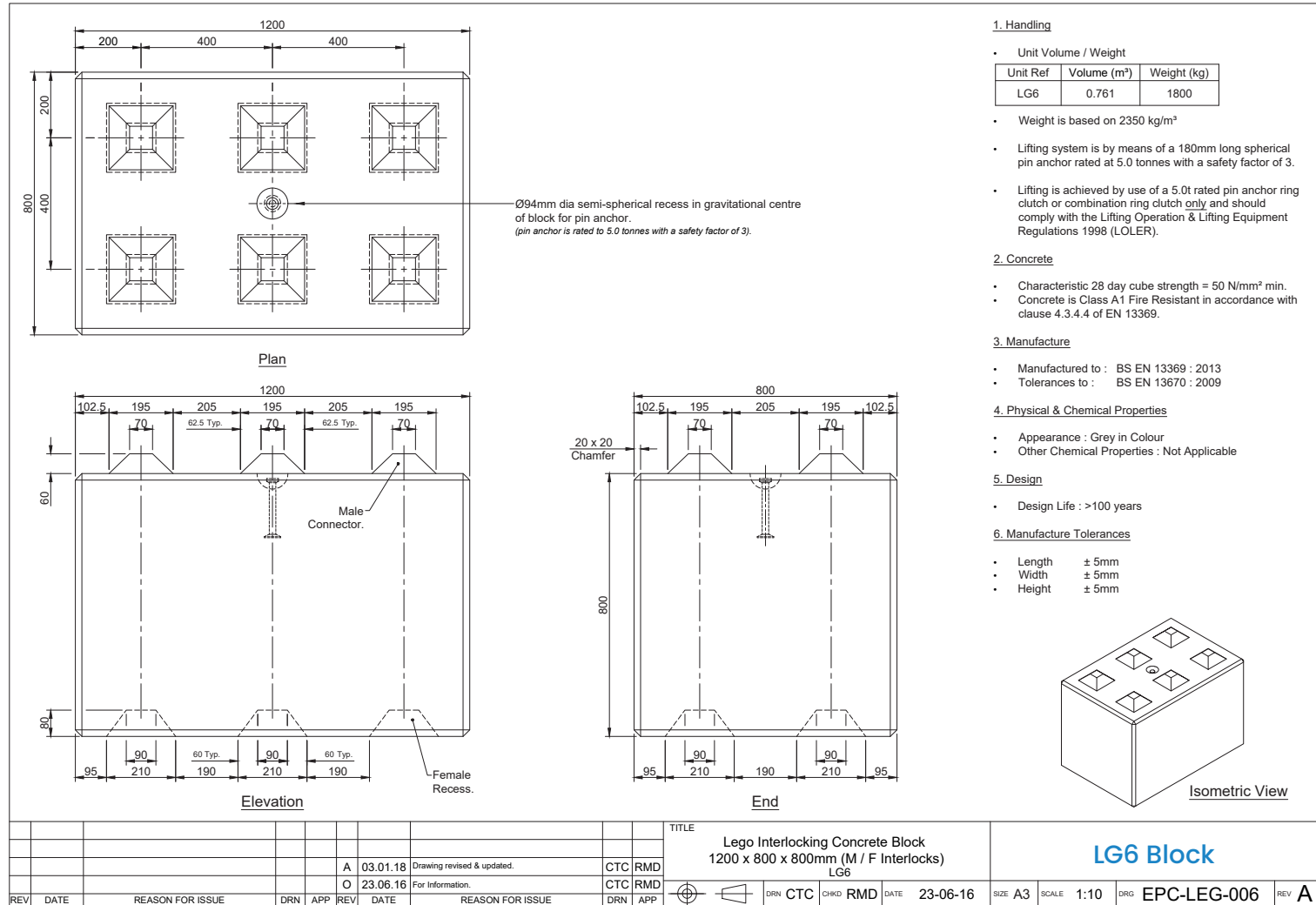
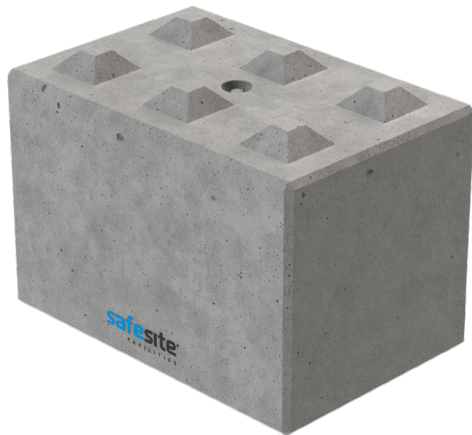
LG5 Block

DATE 23-06-16 SIZE A3 SCALE 1:10 DRG EPC-LEG-005 REV **A**



Technical Details

LG6 block detailed specification and measurements..





Technical Details

LG7 block detailed specification and measurements..



Plan

Elevation

End

1. Handling

- Unit Volume / Weight

Unit Ref	Volume (m ³)	Weight (kg)
LG7	1.006	2365

- Weight is based on 2350 kg/m³
- Lifting system is by means of a 180mm long spherical pin anchor rated at 5.0 tonnes with a safety factor of 3.
- Lifting is achieved by use of a 5.0t rated pin anchor ring clutch or combination ring clutch only and should comply with the Lifting Operation & Lifting Equipment Regulations 1998 (LOLER).

2. Concrete

- Characteristic 28 day cube strength = 50 N/mm² min.
- Concrete is Class A1 Fire Resistant in accordance with clause 4.3.4.4 of EN 13369.

3. Manufacture

- Manufactured to : BS EN 13369 : 2013
- Tolerances to : BS EN 13670 : 2009

4. Physical & Chemical Properties

- Appearance : Grey in Colour
- Other Chemical Properties : Not Applicable

5. Design

- Design Life : >100 years

6. Manufacture Tolerances

- Length ± 5mm
- Width ± 5mm
- Height ± 5mm

Isometric View

REV	DATE	REASON FOR ISSUE	DRN	APP	REV	DATE	REASON FOR ISSUE	DRN	APP	
					A	03.01.18	Drawing revised & updated.		CTC	RMD
					O	23.06.16	For information.		CTC	RMD

TITLE
**Lego Interlocking Concrete Block
1600 x 800 x 800mm (F Interlocks)
LG7**

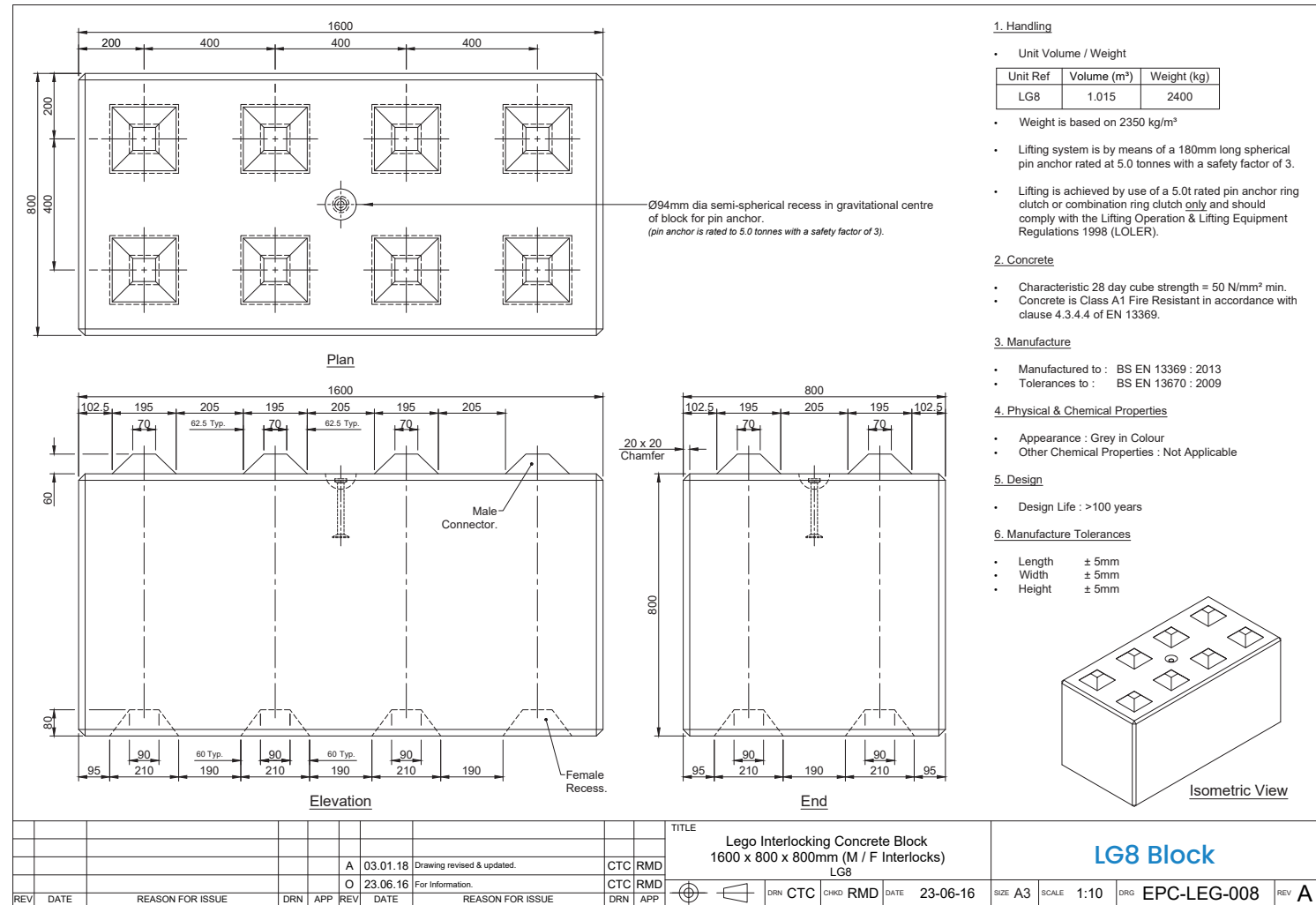
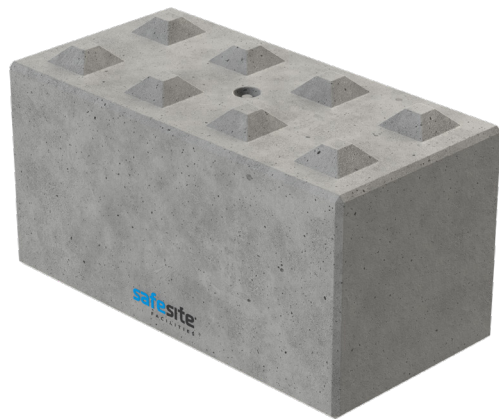
LG7 Block

SIZE	A3	SCALE	1:10	DRG	EPC-LEG-007	REV	A
------	----	-------	------	-----	-------------	-----	---



Technical Details

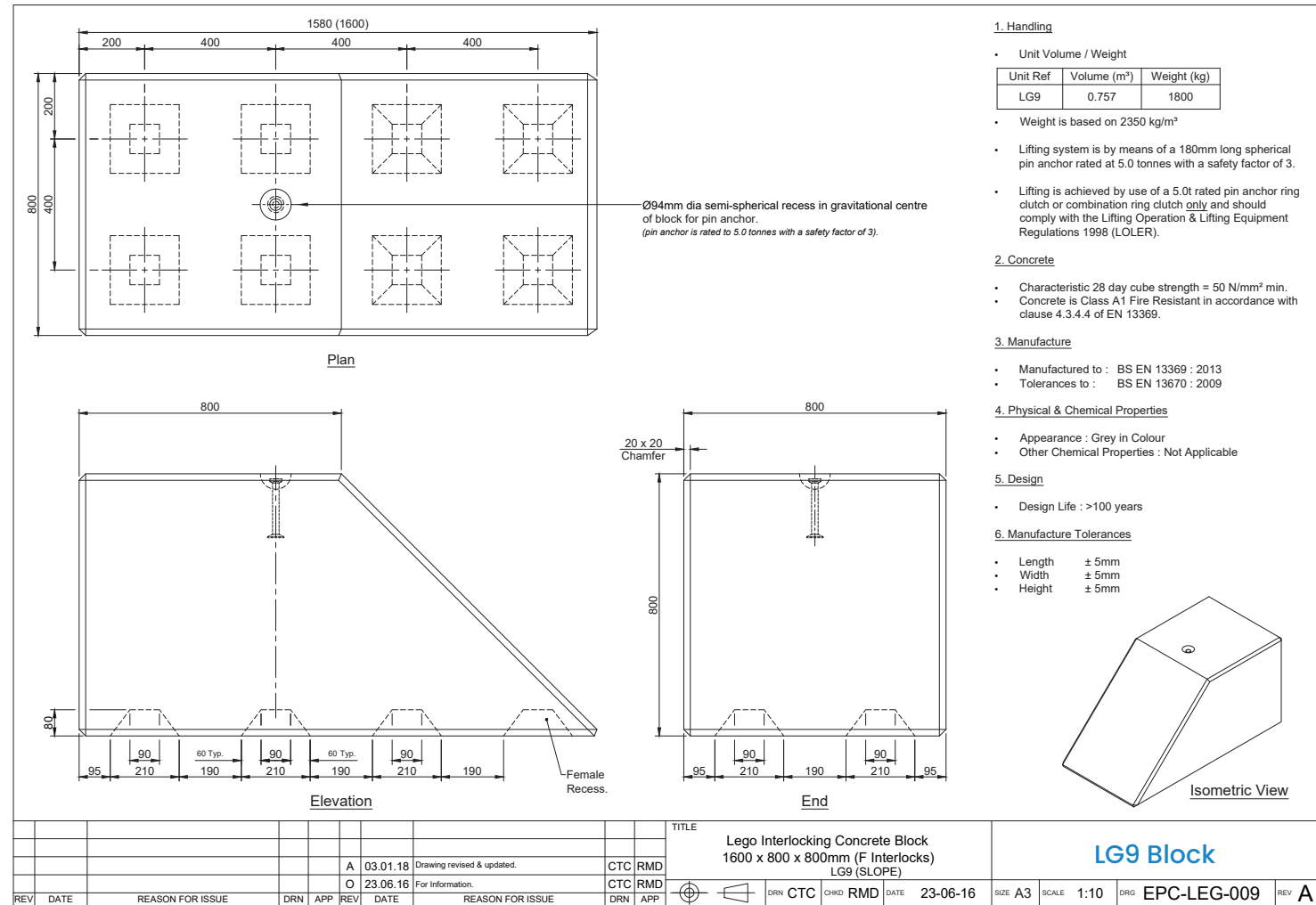
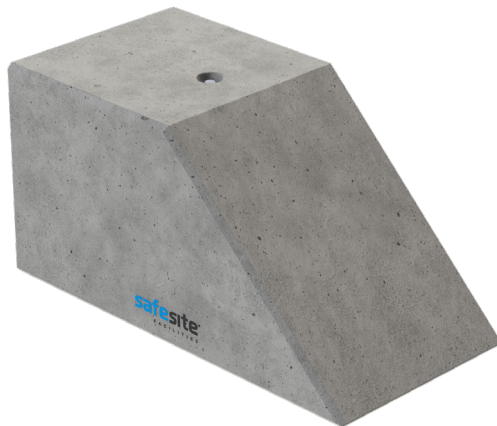
LG8 block detailed specification and measurements..





Technical Details

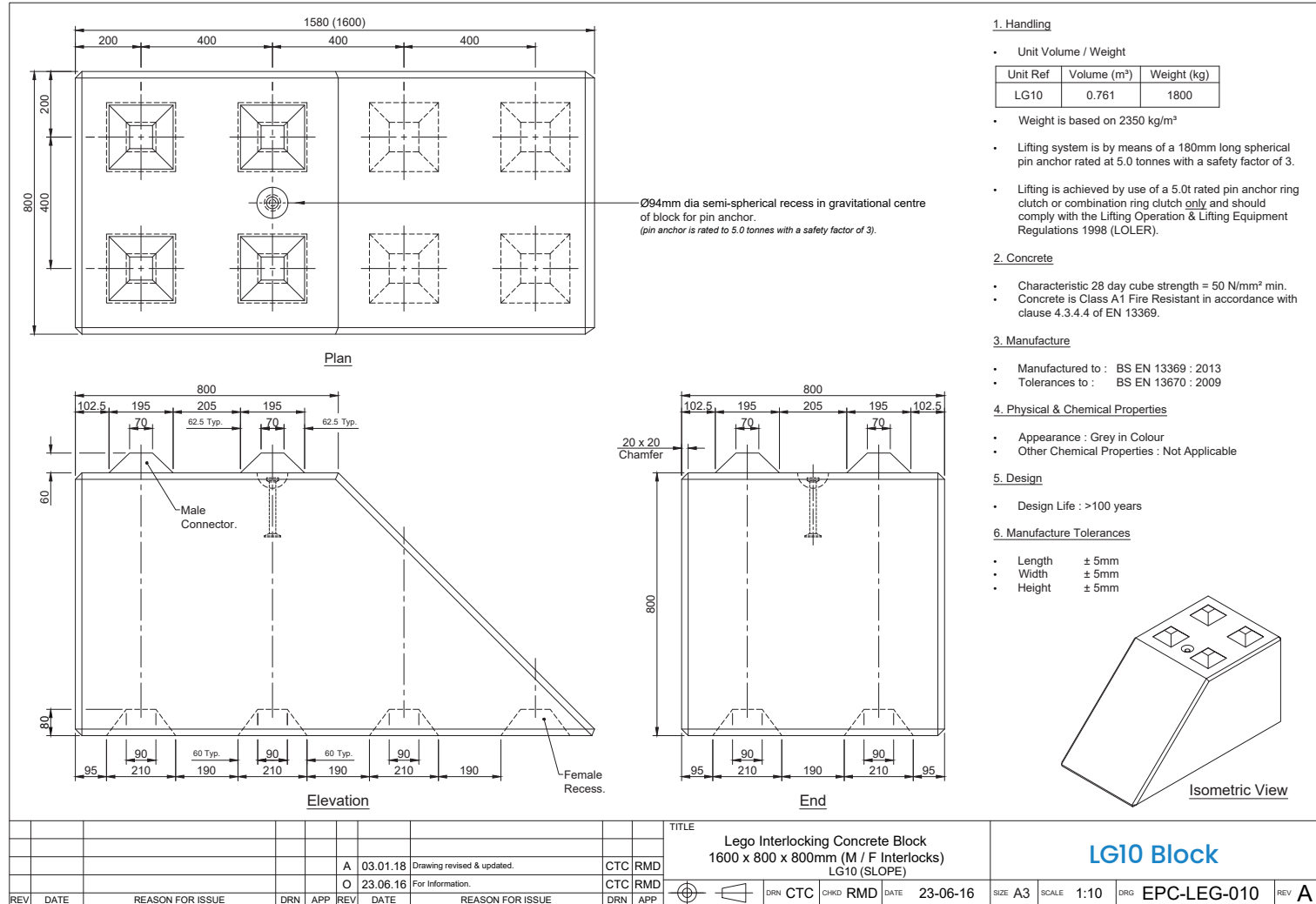
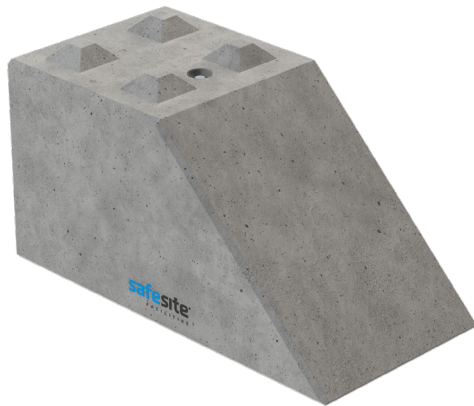
LG9 block detailed specification and measurements..





Technical Details

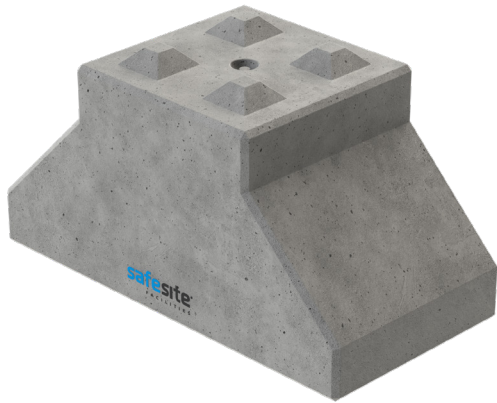
LG10 block detailed specification and measurements..





Technical Details

LG Spreader block detailed specification and measurements..



Ø94mm dia semi-spherical recess in gravitational centre of block for pin anchor.
(pin anchor is rated to 5.0 tonnes with a safety factor of 3).

1. Handling

- Unit Volume / Weight

Unit Ref	Volume (m³)	Weight (kg)
LG11	0.755	1800

- Weight is based on 2350 kg/m³
- Lifting system is by means of a 180mm long spherical pin anchor rated at 5.0 tonnes with a safety factor of 3.
- Lifting is achieved by use of a 5.0t rated pin anchor ring clutch or combination ring clutch only and should comply with the Lifting Operation & Lifting Equipment Regulations 1998 (LOLER).

2. Concrete

- Characteristic 28 day cube strength = 50 N/mm² min.
- Concrete is Class A1 Fire Resistant in accordance with clause 4.3.4.4 of EN 13369.

3. Manufacture

- Manufactured to : BS EN 13369 : 2013
- Tolerances to : BS EN 13670 : 2009

4. Physical & Chemical Properties

- Appearance : Grey in Colour
- Other Chemical Properties : Not Applicable

5. Design

- Design Life : >100 years

6. Manufacture Tolerances

- Length ± 5mm
- Width ± 5mm
- Height ± 5mm

Isometric View

REV	DATE	REASON FOR ISSUE	DRN	APP	REV	DATE	REASON FOR ISSUE	DRN	APP
A	03.01.18	Drawing revised & updated.	CTC	RMD					
O	23.06.16	For information.	CTC	RMD					

TITLE: Lego Interlocking Concrete Block
1600 x 800 x 800mm (M / F Interlocks)
LG11 (Spreader)

SIZE A3 SCALE 1:10 DRG EPC-LEG-011 REV A



Technical Details

LG Bendi block detailed specification and measurements..

