

Battery Powered Bulkhead Light

Specification Sheet

STS211860

18/12/25

safesite[®]
F A C I L I T I E S



Battery Powered Bulkhead Light

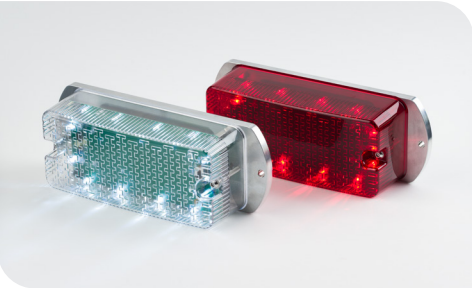
Our battery bulkhead lights come with purpose-designed brackets and fixings tailored to your chosen installation method, whether it's hoarding, Heras fencing, or scaffolding.

The lights are available in either red or white and are commonly used to warn motorists of hoardings or other roadside hazards. Each unit includes a mode switch that lets you choose between constant illumination or flashing.

A built-in daylight sensor automatically turns the lamp off during daylight hours to extend battery life.

Powered by four D-cell batteries, the light can operate for over 6 months in flashing mode and around 12 weeks in constant mode. Tamper-resistant security bolts help prevent unauthorised adjustments.

Bulkhead lights available in red & white

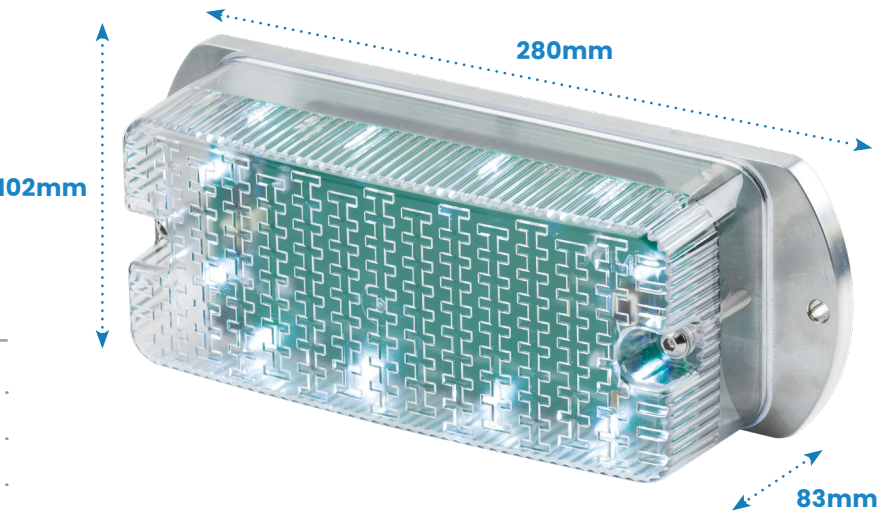


Solid backplate for hoarding fixing



Key Features

- Battery powered
- Available in red or white
- Available in fence, hoarding & scaffolding fixings
- Light intensity: 1.00 Lux (red), 8.68 Lux (white)
- Tamper resistant security screws
- 4 x D type Duracell industrial batteries
- RoHS compliant
- 4 selectable flashing or constant mode
- Built in daylight sensor
- All lights come with batteries included & replacement batteries can be provided
- Security key is provided to access the lights with your order

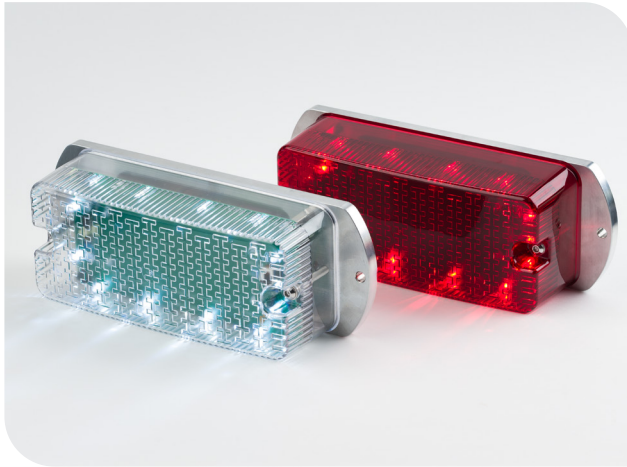


Battery Powered Bulkhead Light Specification

Description	Size (mm)	Weight (kg)
STS211860 – Battery Powered Bulkhead Hoarding Light – Red	H102 x W280 x D83	1.5
STS211862 – Battery Powered Bulkhead Hoarding Light – White	H102 x W280 x D83	1.5
STS211876 – Battery Powered Bulkhead Fencing Light – Red	H102 x W280 x D83	1.5
STS211877 – Battery Powered Bulkhead Fencing Light – White	H102 x W280 x D83	1.5
STS211878 – Battery Powered Bulkhead Scaffold Light – Red	H102 x W280 x D83	1.5
STS211879 – Battery Powered Bulkhead Scaffold Light – White	H102 x W280 x D83	1.5



Battery Powered Bulkhead Light Fixing Options



STS211860/62 - Hoarding

Fitted as Standard

Anti-Tamper security screws



STS211876/77 - Heras Fence Style Fixing

Fixes onto Heras Style Fencing

Requires a Anti-tamper Fence Coupler Spanner

Uses Heavy Duty Anti-Tamper Gripper Fence Coupler V2

Anti-Tamper security screws



STS211878/79 Scaffold Fixing

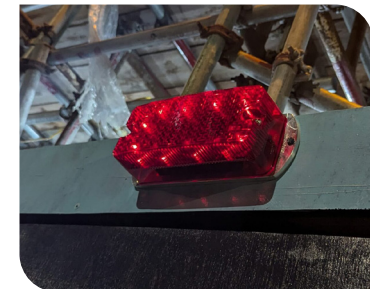
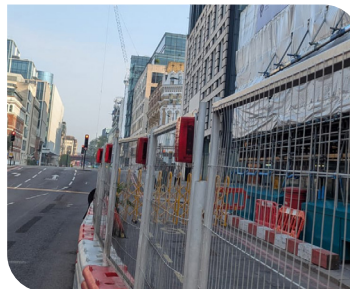
Standard Half swivel Bracket

Uses Scaffold Coupler

Use Allen Key or Security Key

Anti-Tamper security screws

Battery Powered Bulkhead Lighting in situ



Contact our sales team and let us know what fixing option you need when enquiring