



## PYRAMID BARRIER INSTALLATION GUIDE

Pyramid Barriers are water-filled separators which form a solid barrier between pedestrians and traffic when connected together.

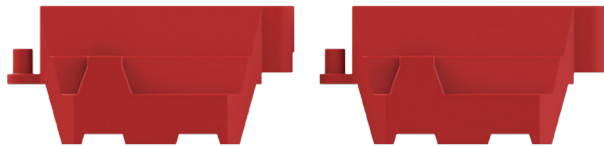
People to Install:



Equipment / Accessories Needed:

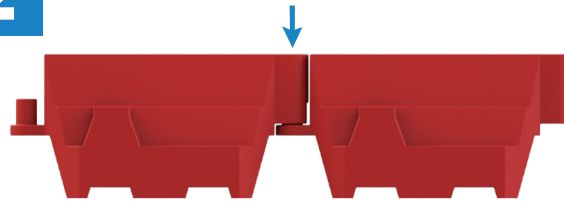
- Washers and bolts

**1**



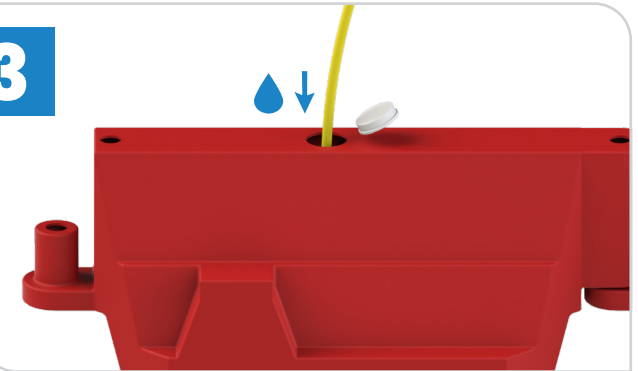
Place the barriers along the perimeter line you are creating. All the barriers should face the same direction and be placed on level ground.

**2**



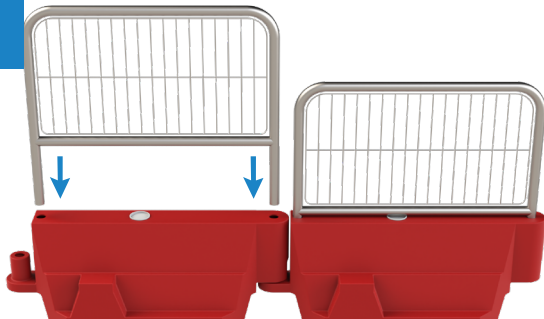
When 1st barrier is in place, lift the end of the second barrier lower it into the prong/socket.

**3**



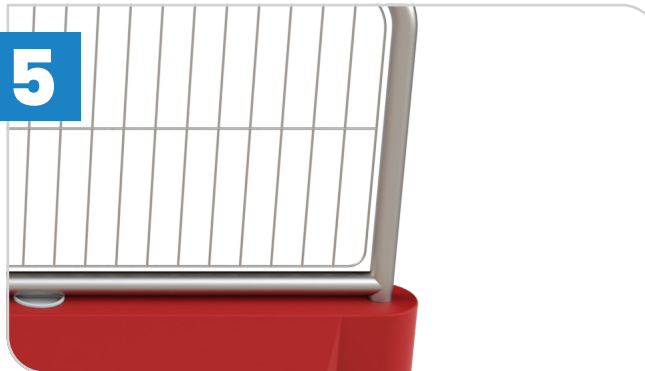
Once you are happy with how the barriers have been linked and arranged, open the white cap on the top of the barrier fill with water (approx. 50 litres).

**4**



If add fencing - slot the mesh fence or hoarding panels into the holes at either end of the barriers.

**5**



Secure the panels in place by tightening with washers and bolts provided.

