



Manta Lite Barrier

Specification Sheet
MTS190016

20/01/26

safesite[®]
F A C I L I T I E S

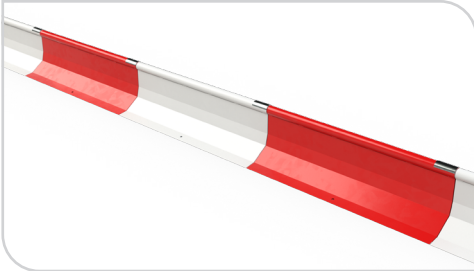


Manta Lite Barrier

Manta Lite is an evolution of the original barrier system, engineered for easier handling and faster installation. Its lightweight construction reduces strain on site teams, enhancing both safety and efficiency during setup and relocation.

Offering a practical, cost-effective alternative to water-filled barriers, Manta Lite enables rapid deployment in areas where crash-tested protection is not required.

Manufactured in the UK from recyclable, galvanised steel, Manta Lite is available in both powder-coated and uncoated finishes, ensuring long-term durability. Each unit connects securely using a removable steel pin, forming a continuous barrier system that can be easily reused across multiple projects.



Line of Manta Lite Barriers



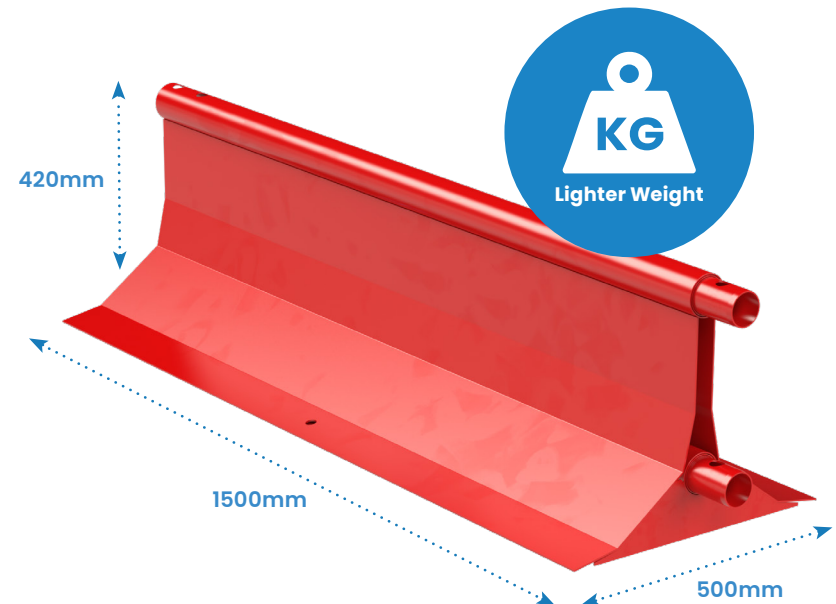
Connection Pin

Manta Lite Barrier Specification

Description	Size (mm)	Weight (kg)
MTS190016 – Manta Lite Barrier – Red	H420 x W1500 x D500	26.2
MTS190018 – Manta Lite Barrier – White	H420x W1500 x D500	26.2
MTS190010 – Manta Lite Barrier – Unpainted	H420x W1500 x D500	26.2
MTS190000 – Manta Lite Barrier – Unpainted Hi-Vis	H420x W1500 x D500	26.2

Key Features

- Lighter weight version of the original Manta Barrier
- Can be used with mesh fence and steel hoarding panels
- Stackable for easy transportation
- Anti-vandal design
- Accomodates 90° bends
- Available in 2 high visibility powder coated colours
- Also available in the unpainted galvanised finish





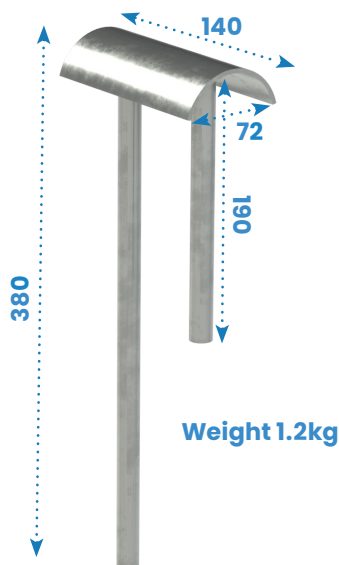
Important Information!

Manta Barriers Don't Need Connection Bars

The Manta Barrier still maintains its tested safety standards when also supporting either a 1.5m pedestrian fence or 3m temporary fence, this is due to the Manta Barriers innovative design and installation method which eliminates the need for a connection bar.

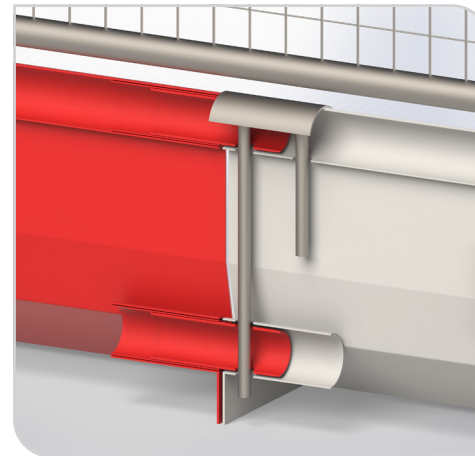
This marketing leading system not only saves time during installation, but also saves space when in transit. Regardless of whether your installation is standalone or requiring of a fence add-on, no connection bar will ever be required.

This approach to the system aids the streamlining of installation through both speed, and easy handling of the lightweight connection pin plate used to join the barriers.

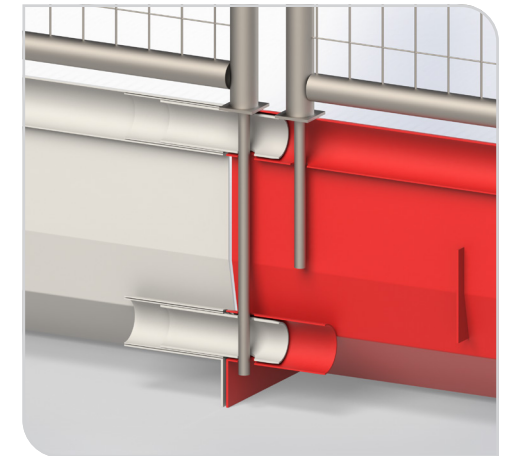


Key Features

- No connection bar is ever required
- Maximises Installation times
- Connection is achieved by pin plate when using a standalone barrier
- Manta Barriers can also connect using the legs of the fencing add-ons to act as connection pins without reducing safety
- Connection Pin Plate is a lightweight, easy to handle size



Manta Barriers connected using Pin Plate



Manta Barriers connected using fence add-on bar extensions



Manta Lite Unpainted Barrier options also available

This version of the Manta Lite barrier offers the same durable, long-lasting design as the original, but without the powder-coated finish.

Made from recyclable galvanised steel, it is built to withstand tough conditions and is suitable for repeated repositioning and reuse throughout the life of your project.

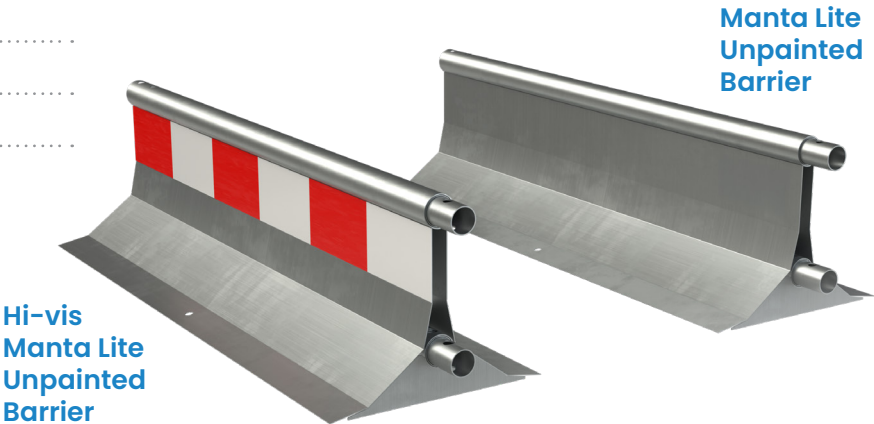
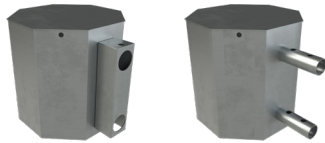
Available in standard or high-visibility option. Each unit securely connects to the next using a removable steel pin, allowing you to create a continuous and adaptable barrier system tailored to your site requirements.

Description	Size (mm)	Weight (kg)
MTS190010 – Manta Lite Unpainted Barrier	H420 x W1500 x D500	48
MTS190000 – Manta Lite Unpainted Barrier (Hi-Vis)	H420 x W1500 x D500	48
MTS200098 – Manta Unpainted Barrier Corner Section (Type 1)	H420 x W1570 x D500	43
MTS200108 – Manta Unpainted Barrier Corner Section (Type 2)	H420 x W1505 x D500	43
MTS200096 – Manta Unpainted Barrier Corner Section Hi-Vis (Type 1)	H420 x W1570 x D500	43
MTS200106 – Manta Unpainted Barrier Corner Section Hi-Vis (Type 2)	H420 x W1505 x D500	43
MTS200128 – Manta Unpainted Barrier End Stop (Male)	H500 x W660 x D490	17
MTS200188 – Manta Unpainted Barrier End Stop (Female)	H500 x W580 x D490	19

Corner sections



End Stops



Manta Lite Unpainted Barrier

Hi-vis Manta Lite Unpainted Barrier



Manta Barrier 1.5m Pedestrian Fence

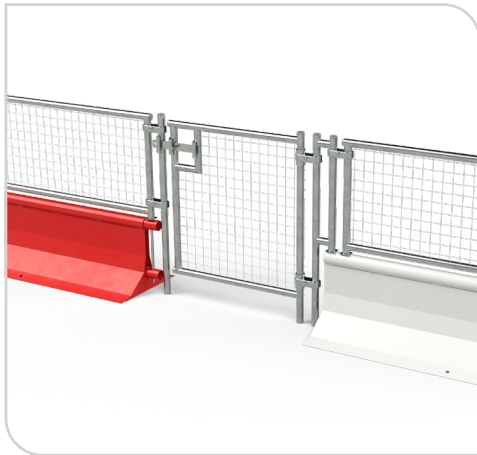
The Manta Barrier Pedestrian fence is very lightweight, weighing only 5kg. Despite its light weight, the pedestrian fence extension increases the overall height of the barrier system to a substantial 1m.

This quick and easy to install extension provides the additional security often needed to protect vehicle drivers, workforce and pedestrians.

By using the pedestrian fence extension you have the reassurance of knowing the extra height achieved will reduce the risk of a passer-by perimeter breach.



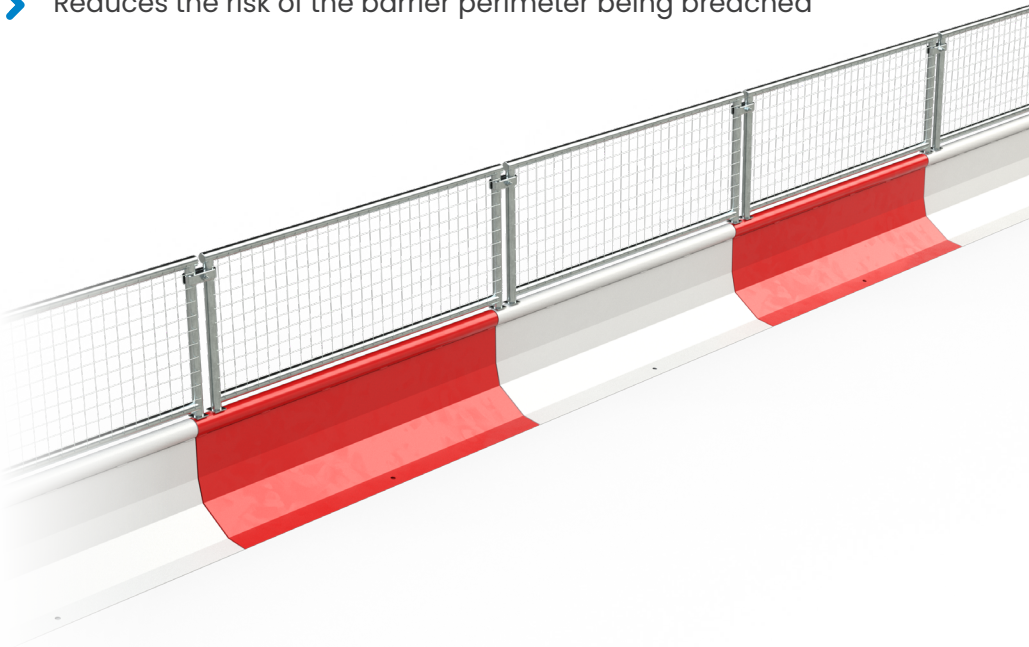
1.5m Pedestrian Fence



In-Line Manta Pedestrian Gate

Key Features

- Increases overall height to 1m
- Legs double up as connection pins
- Anti-climb mesh
- Quick and easy to install
- Provides protection to workforce and pedestrians
- Manufactured using galvanised steel
- Reduces the risk of the barrier perimeter being breached



1.5m Pedestrian Fence Specification

Description	Size (mm)	Weight (kg)
MTS200450 – 1.5m Pedestrian Fence	H580 x W1463 x D38	6

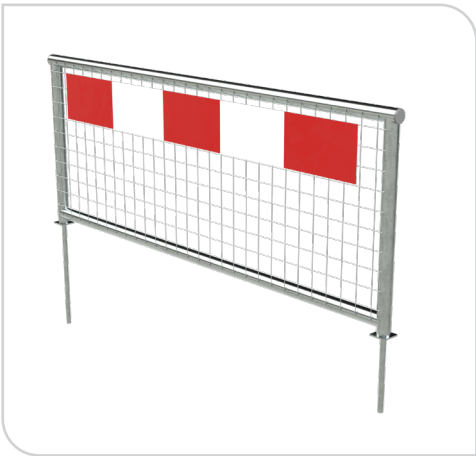


Manta Barrier Chapter 8 System

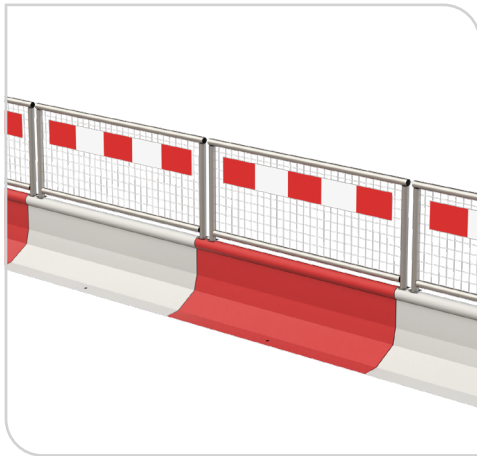
This enhanced version of the 1.5m pedestrian fence has high visibility and highly reflective red and white markings.

The additional high visibility markings ensure compliance to Chapter 8 requirements, the system is also compliant to road traffic standards BSEN8442 & BSEN12899-1.

Our Manta Barrier Chapter 8 System is strong enough to remain stable in adverse weather conditions due to the substantial 42kg Manta Barrier base unit, this is significant when you consider many Chapter 8 barriers weigh less than 15kg.



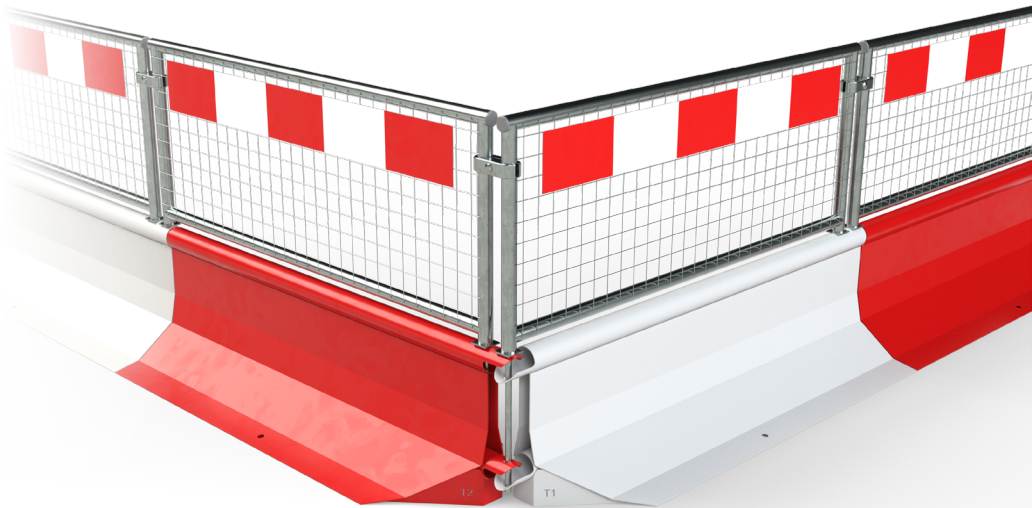
1.5m Chapter 8 Pedestrian Fence



Row of Manta Barriers with Chapter 8 Pedestrian Fence

Key Features

- High visibility
- Legs double up as connection pins
- Anti-climb mesh
- Chapter 8 compliant
- Provides protection to workforce and pedestrians
- Manufactured using galvanised steel
- Compliant to requirements BSEN8442 & BSEN12899-1
- Increases overall height to 1m



1.5m Chapter 8 Pedestrian Fence Specification

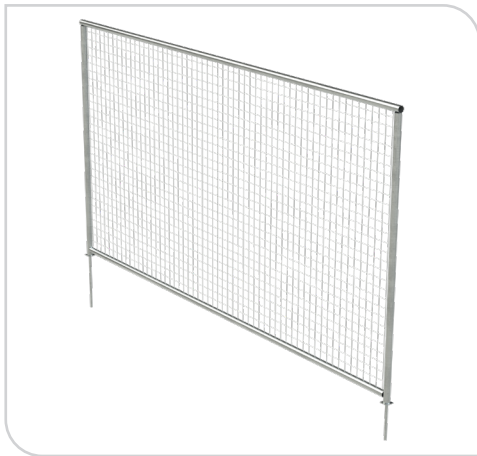
Description	Size (mm)	Weight (kg)
MTS200500 – 1.5m Chapter 8 Pedestrian Fence	H580 x W1463 x D38	6



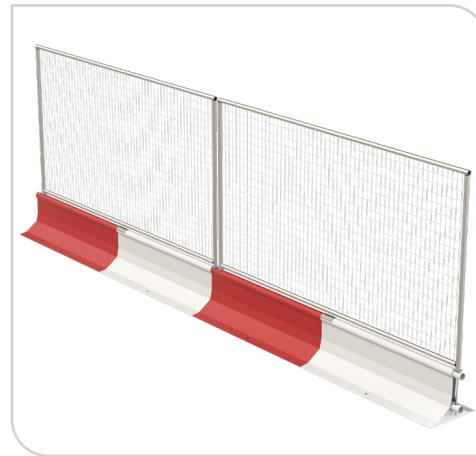
Manta Barrier 3m Fence

In addition to its stand alone benefits, the Manta Barrier can accommodate one of the lightest 3m anti-climb fence panels on the market, allowing for greater ease when manually handling.

The add-on panel massively increases the overall height to a lofty 2m. This quick and easy to install extension provides the reassurance of knowing the chances of a perimeter breach are dramatically reduced.



1.5m Pedestrian Fence



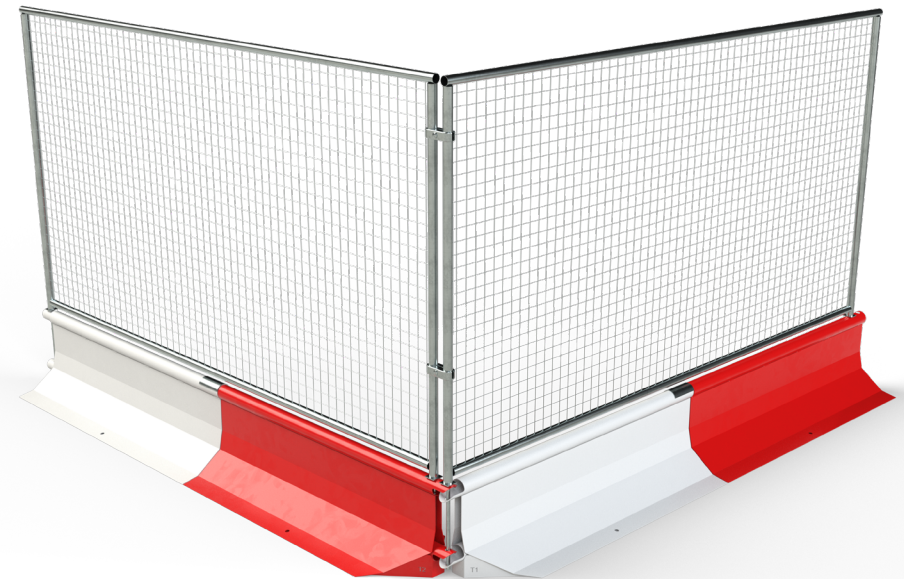
Row of Manta Barriers with 3m Fencing

3m Fence Specification

Description	Size (mm)	Weight (kg)
MTS200400 – 3m Fence	H1580 x W2968 x D38	15

Key Features

- Increases overall height to 2m
- Legs double up as connection pins
- Anti-climb mesh
- Quick and easy to install
- Provides protection to workforce and pedestrians
- Manufactured using galvanised steel
- Reduces the risk of the barrier perimeter being breached





Manta Barrier Hoarding

Our hoarding come in to sizes 2m and 2.4m and can be install on any hard footing, making it ideal for roadworks and site perimeters.

It has a sturdy corrugated galvanised steel construction and bright powder coated colours to demark and obscure site boundary alongside offer the crash protection of the manta barrier. The hoarding utilises the same slot in installation as the rest of the manta's fencing option so installation is quick and easy.



2.4m Hoarding Panel



Row of Manta Barriers with Hoarding panels

Hoarding Fence Specification

Description	Size (mm)	Weight (kg)
MTS200020 – 2m Hoarding Panel	H1580 x W1463 x D38	19
MTS200050 – 2.4m Hoarding Panel	H1980 x W1463 x D38	23
MTS200080 – 2m Hoarding Infill Panel	H1450 x W140 x D1.2	2
MTS200090 – 2.4m Hoarding Infill Panel	H1850 x W140 x D1.2	3
MTS200095 – Hoarding Fence Stabiliser	H1905 x W130 x D38	2

Key Features

- Increases overall height to 2m or 2.4m
- Legs double up as connection pins
- Corrugated Steel Construction
- Quick and easy to install
- Provides protection and obscures sight lines
- Manufactured using galvanised steel
- Powder coated in hi vis red and white or galvanised
- Reduces the risk of the barrier perimeter being breached

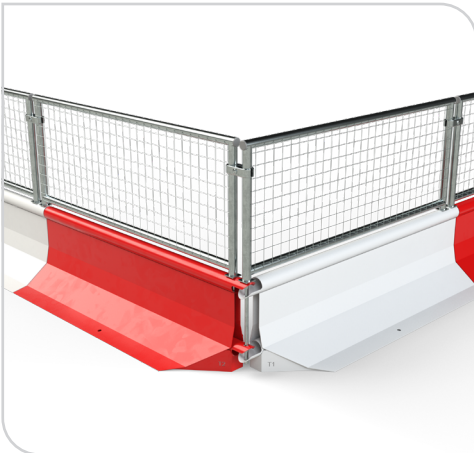




Manta Barrier Corner Sections

Manta Barrier Corner Sections give the ability to rotate units at 90° to accommodate right angles and bends.

Common applications include defining pedestrian walkways and vehicle access, for example, to create a pit lane on a construction site or anywhere that requires the demarcation of vehicle traffic and footfall for pedestrian, visitor and workforce safety.



Manta Barrier 90° with fence



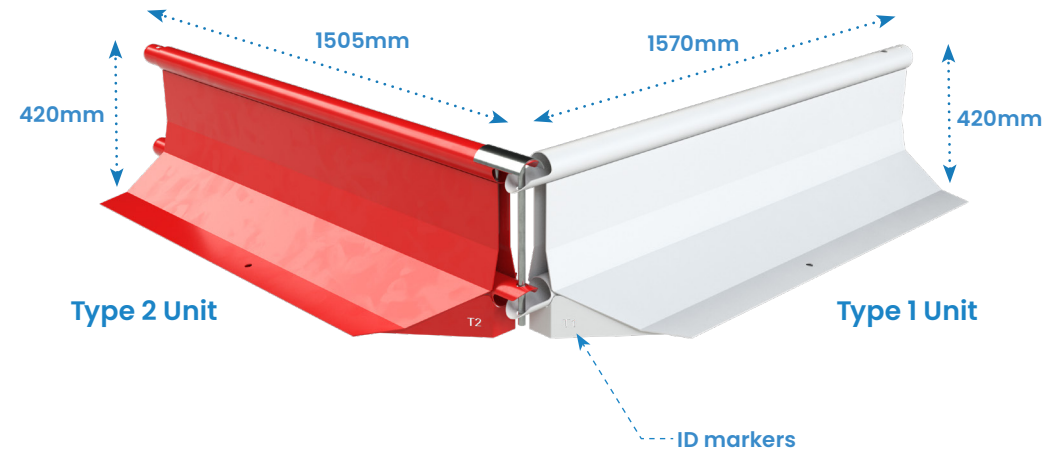
Manta Barrier Type 1 Unit in red

Manta Barrier Corners Specification

Description	Size (mm)	Weight (kg)
MTS200I00 – Manta Barrier Corner Type 1 Red	H420 x W1570 x D500	43
MTS200I05 – Manta Barrier Corner Type 1 White	H420 x W1570 x D500	43
MTS200I20 – Manta Barrier Corner Type 2 Red	H420 x W1505 x D500	43
MTS200I25 – Manta Barrier Corner Type 2 White	H420 x W1505 x D500	43

Key Features

- Easy connection brackets
- 45° angled body to allow for 90° angle when joined
- Fence add-ons can still be used with angled sections
- Perfect for forming pedestrian walkways and construction site access areas
- Identification markers for easy install





Manta Barrier End Sections

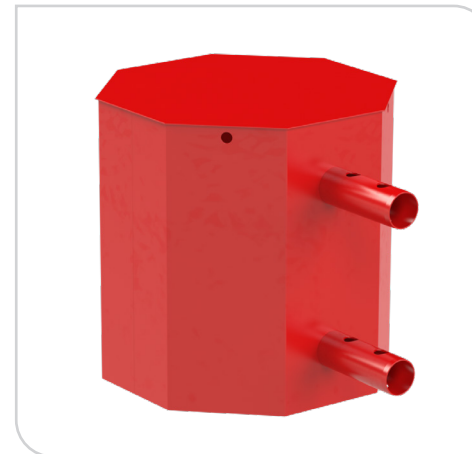
A run of Manta Barriers can be neatly finished off by using our specially designed end section unit, the finishing section is available for both male and female connections and ensures there are no unwanted edges that could potentially be hazardous.

The end section maintains the height of the standard unit and has the advantage of also being compatible with all of the available fencing add-ons. Other benefits include the end sections ability to act as a cushion absorbing impact and in turn protecting connection parts should the Manta barrier be impacted.

In addition the end section allows for a nice tidy finish to the end of a Manta Barrier run, it also has benefits due to its octagonal shape which minimises movement when in transit if stacked on its side, compared to round competitor units which are prone to excessive movement when in transit.

Manta Barrier End Sections Specification

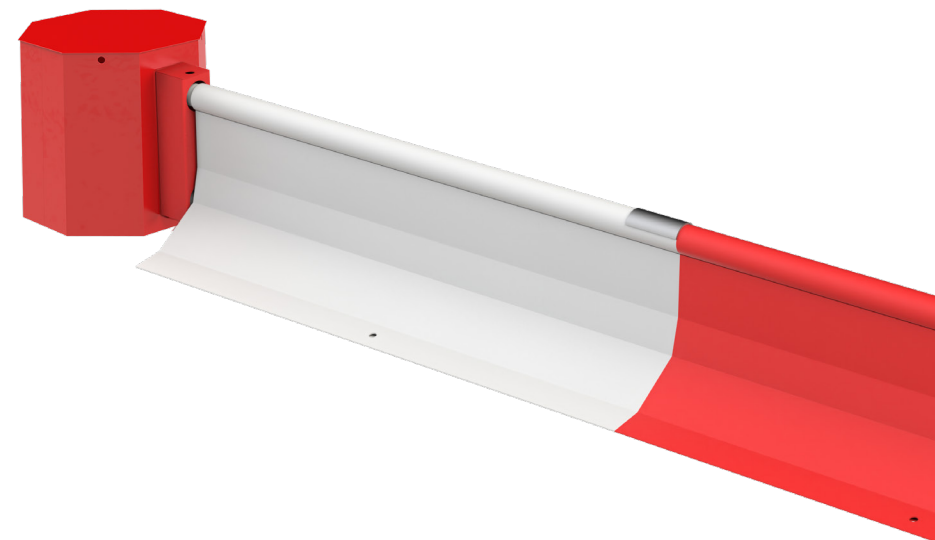
Description	Size (mm)	Weight (kg)
MTS200180 – Manta Barrier Ends Male Red	H500 x W660 x D490	17
MTS200185 – Manta Barrier Corner Male White	H500 x W660 x D490	17
MTS200190 – Manta Barrier Corner Female Red	H500 x W580 x D490	19
MTS200195 – Manta Barrier Corner Female White	H500 x W580 x D490	19



Male End Section



Female End Section





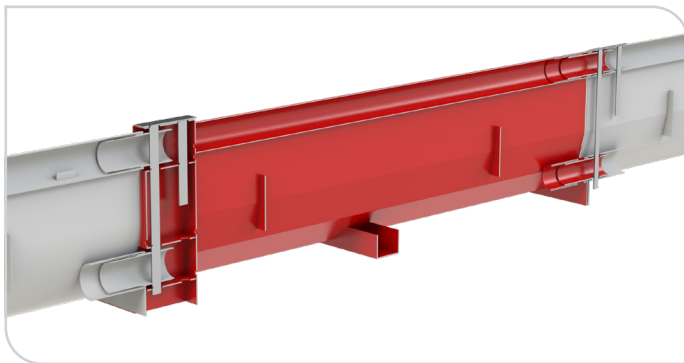
Manta To Mass Adaptation Options

The Manta to Mass Adaptation Barrier is a robust way to fix a row of Mass barriers to a row of Manta barriers.

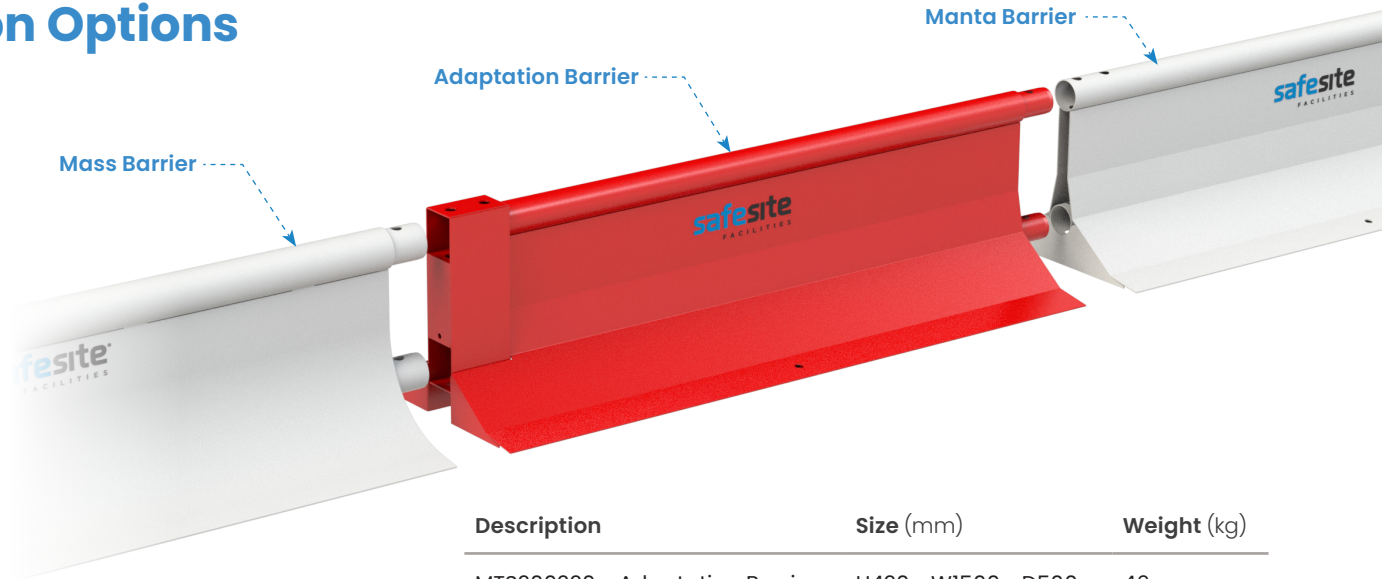
This barrier is connected via the existing pin method present in both barrier systems. Along side this it can be used with all fences that come with the barriers to ensure a seamless transition of your perimeter. The powder-coated finish ensures a professional way to segregate pedestrian traffic and visitors on your site.



Mass connected to a Manta via the Adaptation Barrier



Cut through showing the full barrier and pins in use



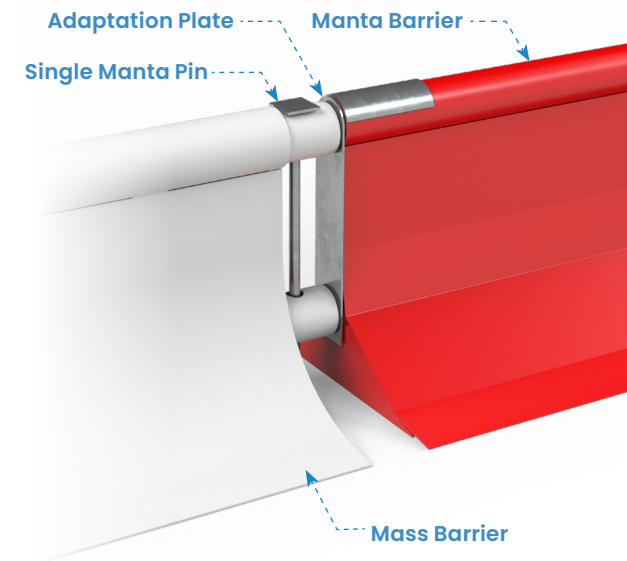
Description	Size (mm)	Weight (kg)
MTS200220 - Adaptation Barrier	H420 x W1500 x D500	46



Manta to Mass Adaptation Plate

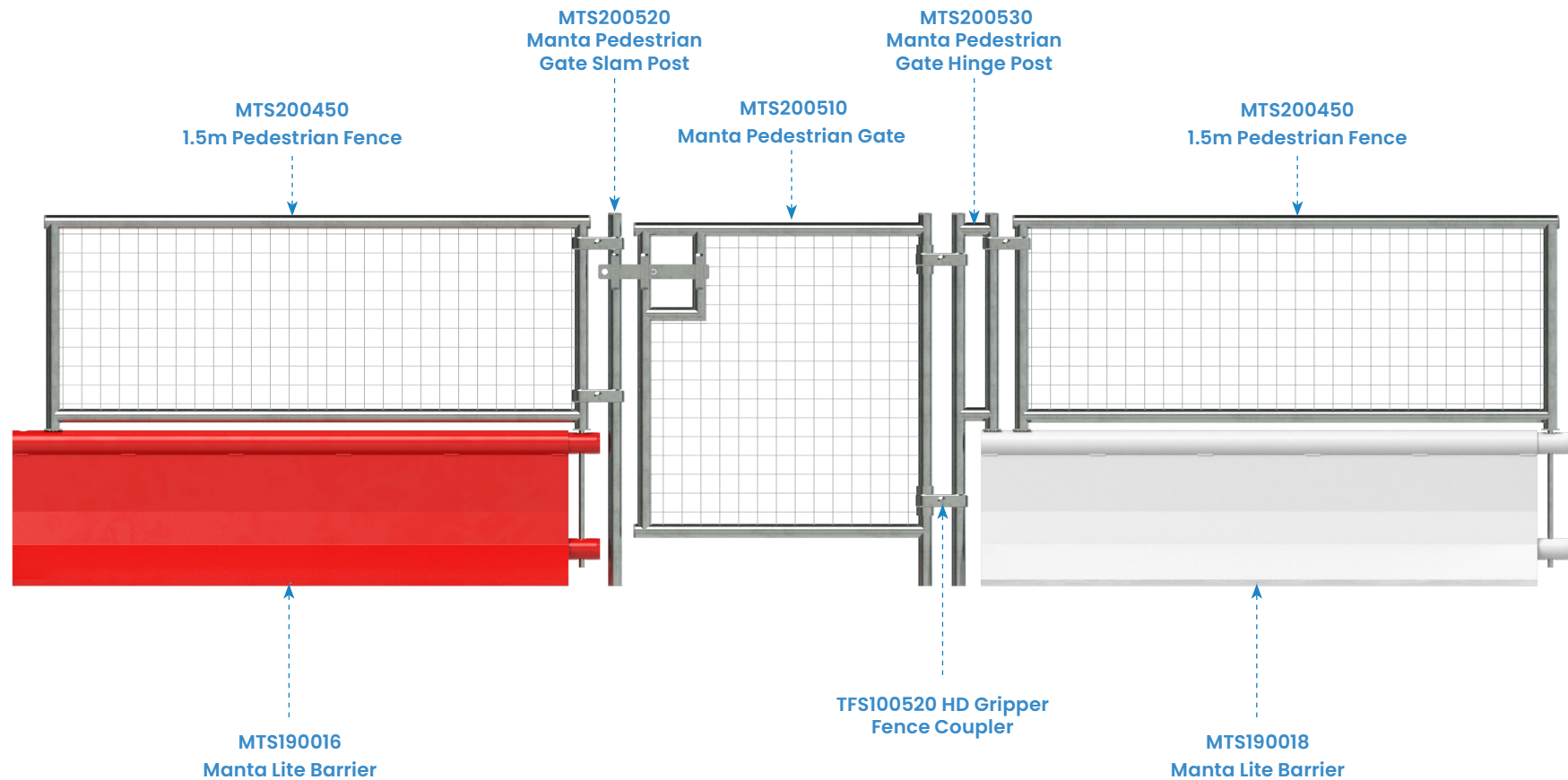
The Manta to Mass Adaptation Plate is a quick and easy way to fix a row of Mass barriers to a row of Manta barriers.

Description	Size (mm)	Weight (kg)
MTS200280 - Adaptation Plate	H388 x W315 x D80	3



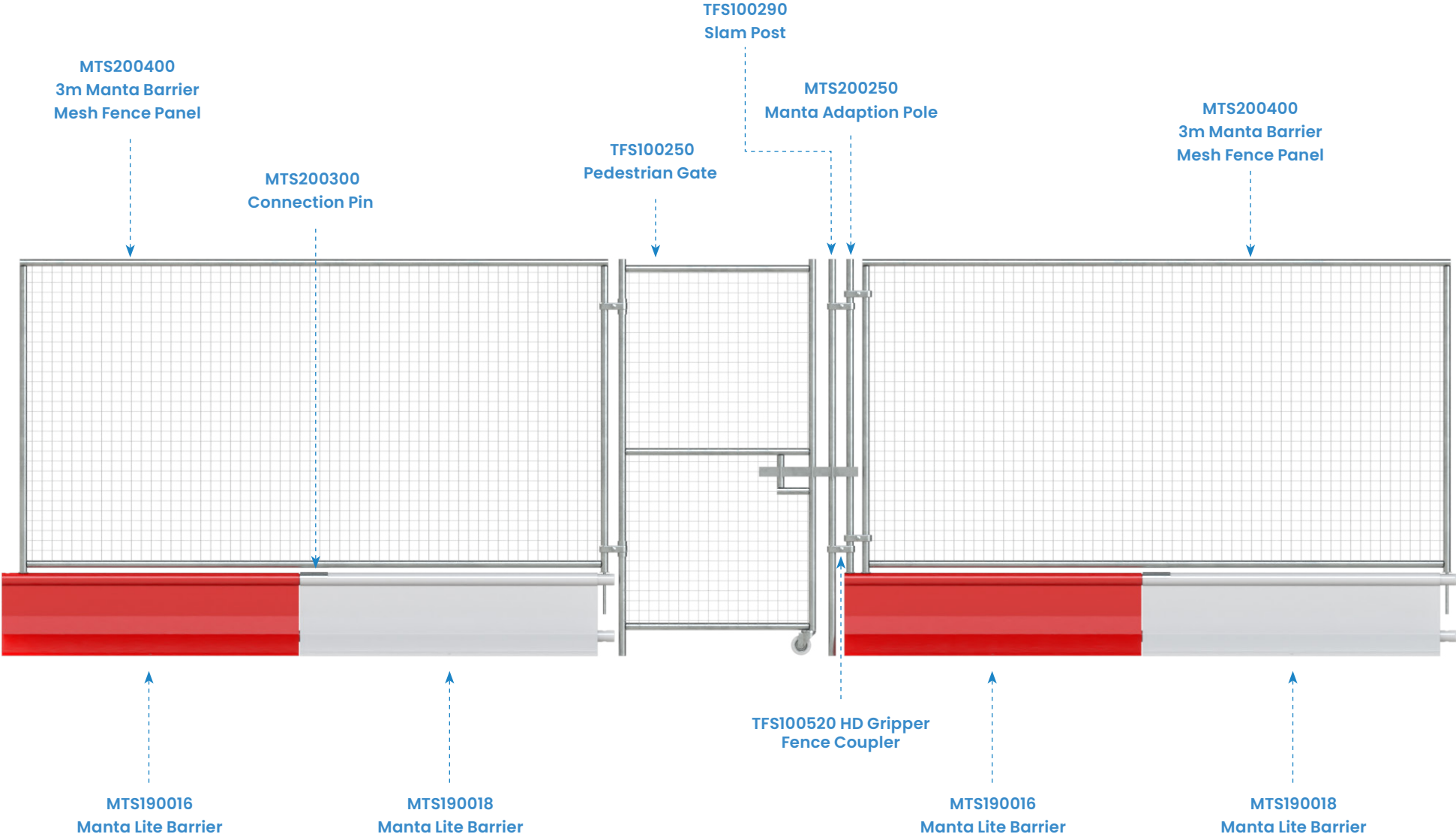


Manta Barrier Low Pedestrian Gate and Fencing



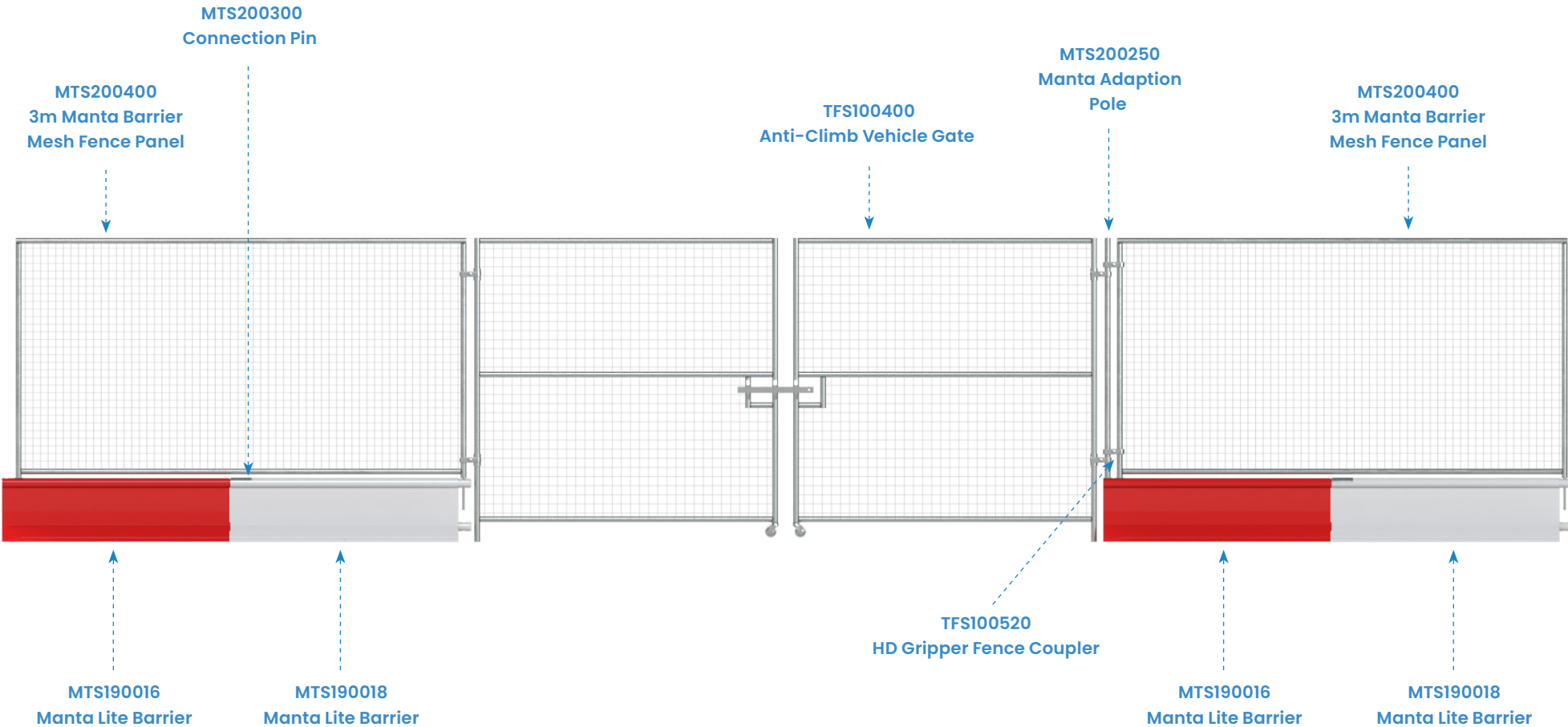


Manta Barrier Pedestrian Gate and Fencing





Manta Barrier Vehicle Gate and Fencing





Installation parts

Manta Barrier – Measurements in mm

Please see below pictures and quantities of additional parts you will receive with each Manta Barrier. The parts below are an essential safety requirement when installing the Manta correctly.

Standard part

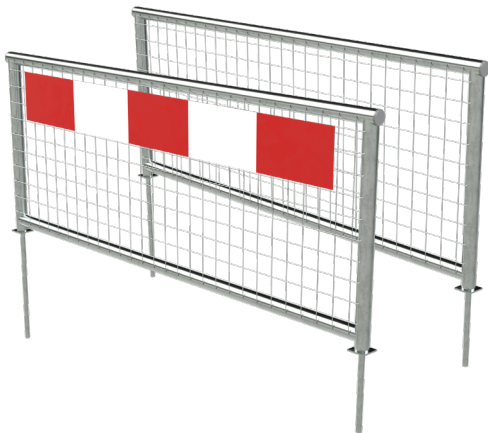
1 Qty 1: Connecting pin



Product ID	MTS200300
Height (mm)	380
Width (mm)	140
Depth (mm)	72
Weight (kg)	1.2

Accessory

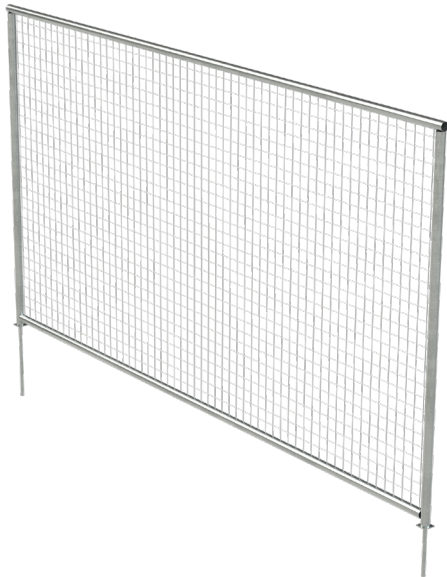
2 Qty 1: 1.5m Pedestrian Fences



Product ID	MTS200450 & MTS200500 (Hi-Vis)
Height (mm)	580
Width (mm)	1463
Depth (mm)	38
Weight (kg)	6

Accessory

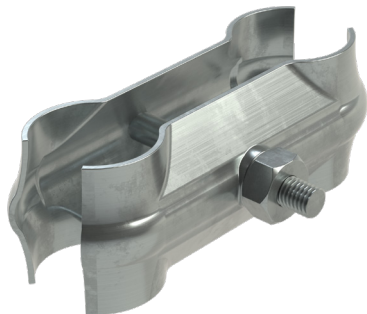
3 Qty 1: 3m Fence – 1 panel per 2 Barriers (1 Connection Pin Required)



Product ID	MTS200400
Height (mm)	1580
Width (mm)	2968
Depth (mm)	38
Weight (kg)	15

Accessory

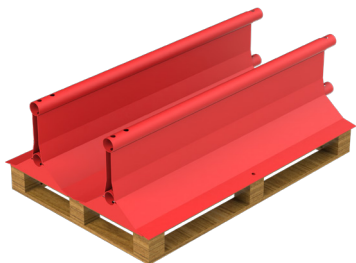
4 Qty 1: Standard Coupler (1 per 1.5m pedestrian fence, 2 per 3m fence)



Product ID	TFS100500
Height (mm)	50
Width (mm)	130
Depth (mm)	52
Weight (kg)	0.2



1

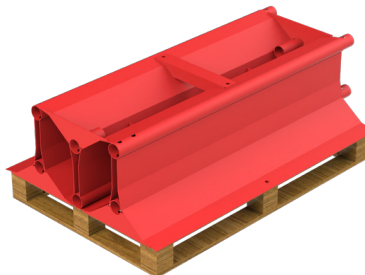


Please be aware the Manta Barriers measure 1.5m in length and will therefore slightly overhang the 1.2m pallet they are to be placed onto, this overhang is acceptable within these guidelines.

Place two Manta Barriers side by side so the inner edge of each foot touches the opposing barrier. Each barrier should align at both ends.

When together the barriers should take a central placement on top of the pallet.

2

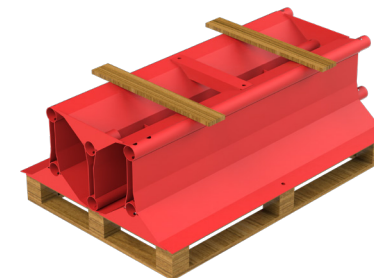


Insert one Manta Barrier upside down to fit inside the empty void that was created from the placement of the previous two barriers.

The feet of this barrier should be evenly supported by the heads of the previous two barriers and also align with the ends of the previous two barriers.

The exposed base of this barrier must be even and level in readiness for the next processes.

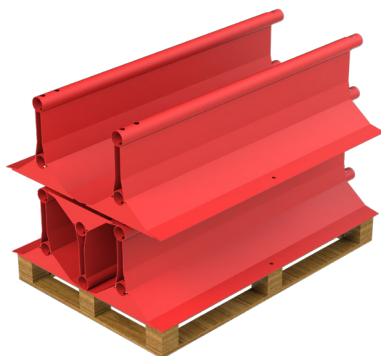
3



Two additional lengths of pallet wood must now be placed onto the flat base of the previously positioned barrier.

These lengths of wood should be placed approximately 15cm within each end of the three stacked barriers, and be placed in such a way the centre of the wood is central to the base of the third barrier and parallel to the pallet beneath.

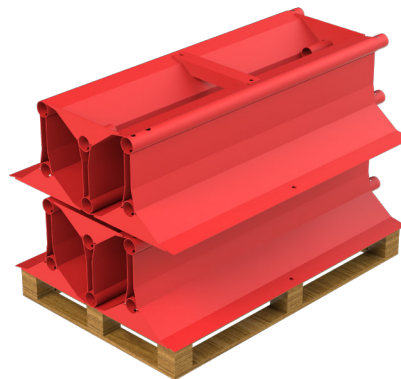
4



Carefully place a further two Manta Barriers side by side onto the previously placed pallet wood so that the inner edge of each foot touches the opposing barrier, each barrier should align top and side with the stacked barriers below.

When together both the barriers should take a central placement in relation to the bottom barriers and pallet.

5

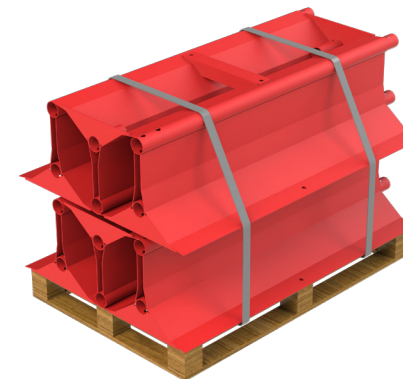


Now one last barrier must be carefully placed on top of the last two barriers to fit inside the empty void that was created.

The feet of this barrier should be evenly supported by the heads of the previous two barriers, and also align with the ends of the previous two barriers.

The exposed base of this barrier must be even and level in readiness for the next processes.

6



Now a check must be carried out to ensure all of the stacked barriers are evenly balanced, stable and level.

Once this check is successfully completed the whole stack must be secured by heavy duty polypropylene pallet strapping to run from the underside of the pallets top level, all the way around the six stacked barriers. Two rings of strapping must be applied approximately one quarter distance from each end of the stacked barriers.