

# safesite<sup>®</sup>

F A C I L I T I E S

RoadRock

*SPECIFICATION SHEET*



# RoadRock

For flexible deployment and solid safety, the SafeSite Road Rock Barrier is a interlocking, multi-functional base section which offers a self-weighted solution for pedestrian and road worker safety and control.

With an innovative interlocking design, each barrier can be easily linked to the next to provide fully secure and sturdy continuous barrier runs. Suitable for use with many types of fencing, Road Rock Barriers are an excellent choice for all public areas where pedestrian control is vital, such as street-works, airports, car parks, hospitals, stations and retail centres and factories.

They also offer many applications for outdoor events such as festivals and shows, where barrier and safe movement control is required.

## Road Rock Barrier Specification

| Length | Width | Height | Weight |
|--------|-------|--------|--------|
| 500mm  | 315mm | 308mm  | 15kg   |

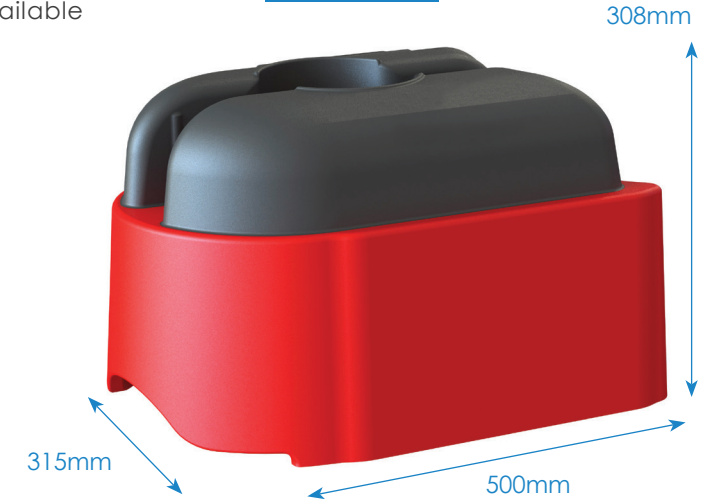
## Key Features

- Interlocking for continuous runs
- Angular movement to accommodate bends and corners
- No sandbags needed for Class B and C wind spec
- Corporate colours and name plating available
- 100% recycled construction
- Gate-system compatible
- RoadRock can be stacked
- Corporate ID can be embossed
- Non-permanent fixing
- Handle for easy lifting

★ Trustpilot



Weight 15kg



Road Rock Barriers Stacked



Interlocking Tail



# Road Rock Wind Loading

All temporary traffic barriers must be able to withstand three different classes of wind speeds with the use of a ballast.

The standard BS 8442:2015 states the three classes as the following - Class A: 26.3 m/s (58 mph), Class B: 17.6 m/s (39 mph), Class C: 8.7 m/s (19 mph).

The RoadRock system was tested under strict conditions at the Mira Full Scale Wind Tunnel to determine what level wind speeds barriers utilising it can withstand.

## 1 Road Rock With Gate Barrier

**42 mph**

Wind speed withstood,  
not to failure point.



## 2 Gate Boxed With Road Rock

**70 mph**

Wind speed withstood,  
not to failure point.



## 3 Road Rock With Vision Barrier

**44 mph**

Wind speed withstood,  
not to failure point.



## 4 Vision Boxed With Road Rock

**63 mph**

Wind speed withstood,  
not to failure point.



# RoadRock In Action

Constructed from sturdy PVC, Road Rock Barriers offer high durability in all-weather situations and are available in highly visible white or red as standard with a black top section, whilst additional corporate colours and signage are also available.

Base units are made from 100% recyclable PVC, which can be further recycled at the end of their considerable street life. The angular design also allows for space-saving packing for transportation, with up to 42 units fitting to a pallet, to help maximise space and minimise carbon emissions through bulk transportation.

Cyclinder Housing

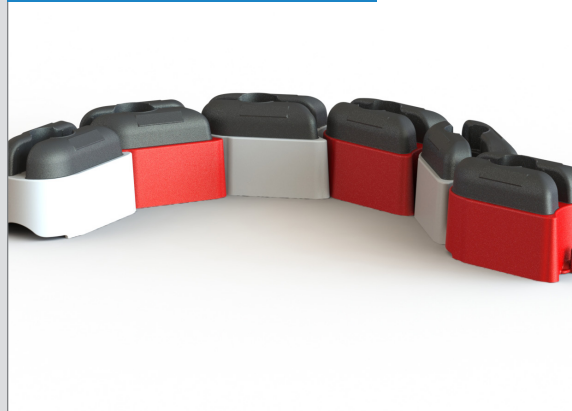


RoadRock With Gate Barrier



RoadRock In Use

Create A Run Of Road Rocks



RoadRock With Vision Barrier





# Technical Details

Weight 15kg

