



Heavy Duty Kerb Guard Temporary Protection

Specification Sheet
STS210910

10/07/25

safesite[®]
F A C I L I T I E S

safesitefacilities.co.uk



Heavy Duty Kerb Guard Temporary Protection

The Heavy Duty Kerb Guard Protection is designed to prevent kerb damage before it happens, eliminating the need for expensive repairs and the disposal of broken kerb stones.

Ideal for busy construction sites, logistics hubs, and temporary works areas, this practical solution saves time, money, and disruption. Made from 100% recycled, heavy-duty PVC, each kerb guard absorbs impact from plant vehicles such as telehandlers, dumpers, diggers, and HGVs. Kerbs are protected from chips, cracks, and breakages—helping maintain a safe, tidy, and compliant site.

Quick and flexible to install, the guards can be fixed with anchor brackets or temporary tarmac, depending on ground conditions and project needs. Available in two widths: 400mm and 900mm, both in high-visibility black or yellow. The 400mm is ideal for corners and curves; the 900mm suits longer straight runs.



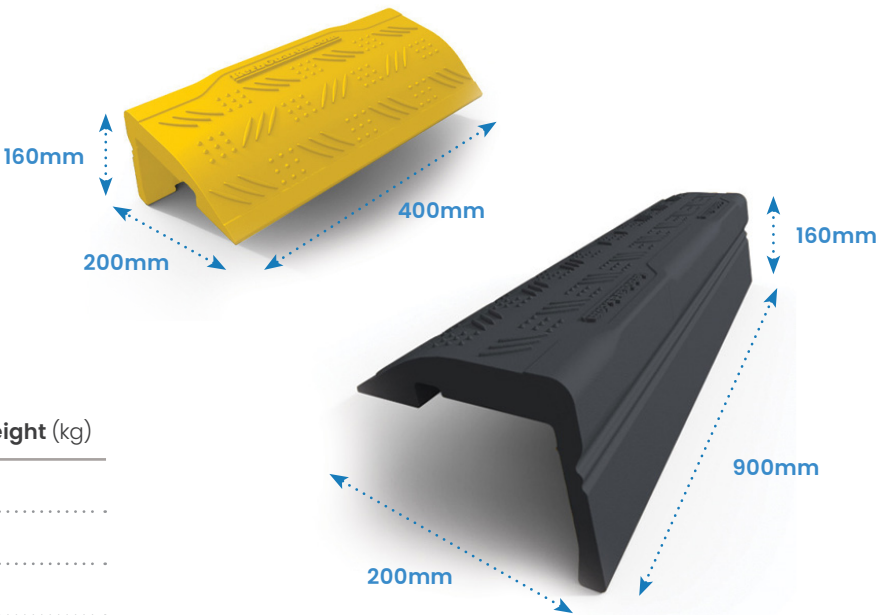
Kerb Guard bolted into the ground



Kerb Guard in situ

Key Features

- Manufactured from 100% recycled PVC
- Reusable, impact-resistant design
- Quick installation with bracket or tarmac options
- Helps avoid expensive kerb replacements
- Available in Black or Yellow
- Optional spacers for top-coated pavements
- Anti-slip tread for improved safety



Description	Size (mm)	Weight (kg)
STS210910 – Heavy Duty Kerb Guard Temporary Protection 400mm (Black)	H160 x W400 x D200	3.7
STS210920 – Heavy Duty Kerb Guard Temporary Protection 400mm (Yellow)	H160 x W400 x D200	3.7
STS210930 – Heavy Duty Kerb Guard Temporary Protection 900mm (Black)	H160 x W900 x D200	8.8
STS210940 – Heavy Duty Kerb Guard Temporary Protection 900mm (Yellow)	H160 x W900 x D200	8.8



Heavy Duty Kerb Guard Temporary Protection Options

